

# Kadey Krogen 39 *Lady Di*



**JEFF MERRILL**  
YACHT SALES, INC.

3010 Old Ranch Pkwy, Suite 440, Seal Beach, CA 90740  
+1 949.355.4950 | [www.JMYS.com](http://www.JMYS.com)



## ***LADY DI***

**Asking: \$280,000.00**

**Location: Vallejo, CA**

*Lady Di* is the ground-breaking hull number one that launched the Krogen 39 phenomenon. She was delivered in 1998, wow, twenty years ago! You can't judge a book by its' cover and the same follows for *Lady Di*. Her cover and all of the pages inside are much newer looking than her model year proclaims.

## Kadey Krogen 39 *Lady Di*

Economical, efficient and practical, ***Lady Di*** is a very appealing choice for first time trawler owners or for sailors who are ready to make the trawler transition and are looking for the room and space more equivalent to accommodations found in a 45' sailboat.

***Lady Di*** was purchased in 2017 by her third owner who attended to all of the survey recommendations and has had her systems and machinery all serviced for cruising. With the survey projects completed (including a new main engine shaft, bottom paint, propeller tuning, etc.) they have recently settled in to enjoy her – only to encounter health issues. For this reason alone, they have decided to sell ***Lady Di***.

Designed by Jim Krogen (senior) to be an offshore, ocean crossing livable trawler for two people, the Krogen 39 has exceeded that goal. She is both compact (for marina slips) and large (spacious interior volume including standing headroom in the front of the engine room) at the same time. Easy to dock with her refined hull shape including wine glass transom and fitted with a bow thruster this is a single engine trawler that is easy to handle. Her exterior; swim platform, covered cockpit, side decks, foredeck, boat deck and flybridge provides a variety of outdoor living space.

From the beginning, the systems on ***Lady Di*** have been purposely minimal. She is a back-to-basics boat that includes the essentials favored by three owners now. Simple, understated, exceptional. The Krogen 39 is a very good secret that is still not as well-known as she should be. ***Lady Di*** has been looked after with regular and caring maintenance, she is as dependable as she is reliable.

The Kadey-Krogen line is very popular and celebrated for their seakeeping abilities. The brand is famous for their gorgeous finish: glistening gelcoat, sparkling stainless and beautiful teak timber throughout. ***Lady Di*** is the equal in elegance to her larger siblings all hand built by Asia Harbor Yacht Builders in Taiwan. The Krogen 39 is no longer in production, the costs to build them became to high and so there are only about 50 hulls sailing the seven seas.

Originally named “Number One”, she was the cover story and feature article in the Winter 1998/1999 *PassageMaker* magazine that announced her arrival and letting the world in on this ‘secret’. Bill Parlato who wrote that piece had an interesting observation, “The Krogen 39 is a trawler designed for KISS passage making. Keep things simple. If you can resist becoming best friends with your local marine store when you outfit the boat, and instead go slowly during the outfitting process, you will be one happy couple with an exceedingly happy boat.”

A true full displacement, long range trawler, she is an ideal cruising platform for an adventurous couple. During her career, ***Lady Di*** has covered the US west coast down south to Mexico and up north to Alaska. She now resides in Vallejo, home of the California Maritime Academy. Provisioned and topped off with fuel she is a few short miles away from clearing the Golden Gate with a virtually unlimited itinerary of blue water to explore.

**The Krogen 39 lives up to the Kadey-Krogen marketing slogan, “At Home On Any Sea”.**

# Kadey Krogen 39 Lady Di

## **DESCRIPTION:**

Profile: Sharing the rugged good looks of her siblings, the Krogen 39 is often mistaken for one of her larger sisters, especially when perspective is difficult offshore. The high bow keeps her dry at sea and she is gracefully proportional, everything is just right.

Swim Platform, Cockpit and Lazarette: Boarding aft (from the swim step or dock) you enter the cockpit which is covered overhead and includes teak decking underfoot. The cockpit has a ladder for access up to the boat deck and flybridge.

Side Decks: From the cockpit going forward there are teak side decks port and starboard (covered) that merge into fiberglass steps that lead up to the foredeck.

Foredeck: The foredeck has stainless safety rails and a horizontal electric windlass with a complement of anchors and assorted ground tackle.

Boat Deck: The boat deck is above the cockpit and connected by the ladder that has a hatch covering for safety. Her RIB tender dinghy is mounted fore / aft (guarding the hatch with a stainless pen). The painted aluminum spar arrangement provides antenna mounting on the mast, and the boom serves as the dinghy launching davit.

Flybridge: Forward and up on top, the flybridge has a folding canvas Bimini cover. There is outboard bench seating on each side. This is an ideal location for cruising on a sunny day or for relaxing safe in harbor with a spectacular view. You can steer the stainless-steel destroyer helm, thrust the bow and monitor basic navigation electronics from this perch.

Saloon: Entering through the saloon door from the cockpit, you will appreciate the fantastic visibility to the outside through teak framed opening windows and will be greeted by a warm teak interior. There are built in settees port and starboard with comfortable Ultrasuede upholstery and a teak parquet floor. The dining table is a teak high – low that can be easily tucked away while offshore or repositioned outside in the cockpit. There is a built-in bank of drawers with a counter surface forward to port and the steps here lead up to the pilothouse.

Galley: The galley is forward to starboard lined with white Corian counters and white laminate verticals to keep it light and easier to clean. There is an opening portlight outboard to provide both a view and ventilation. The galley includes lockers and drawers, a tall refrigerator, large sink, stove and oven plus microwave for easy and satisfying meal preparation.

Pilothouse: Moving forward and up the steps to the pilothouse, you pass an outboard locker with a louvered door that conceals the combo clothes washer/dryer. The pilothouse has an impressive view making operations underway very easy to manage and includes doors to the outside decks port and starboard. There is a wide and comfortable settee with a table aft, and the forward nav/com dash has an appropriate concentration of navigation and communications electronics and features a large teak steering wheel on centerline. The flooring is teak and holly and the rich teak joinery in the pilothouse is complemented by white surfaces and white overhead with an opening hatch.

# Kadey Krogen 39 Lady Di

Forward Lower Landing: Taking the stairs that curve to the lower level you reach a landing that allows you to go forward to the master stateroom, outboard to starboard to the head and shower, or aft to the engine room.

Master Stateroom: The full beam master with island queen sized walk around bed is surrounded by teak lockers and doors. Varnished teak ceilings outboard combine with white laminate to make this room feel spacious and an overhead hatch plus outboard opening portlights provide ventilation.

Head and Shower: The head and shower include a sink basin and is surprisingly roomy and convenient for anybody aboard.

Engine Room: The engine room is under the saloon and has stand up 6' plus headroom as you enter and plenty of access to move around once inside. There is a work table area with a tool box and room for storage of oil, filters, etc. She is powered by a John Deere main engine. Neat installations of machinery and hose runs show the care in her construction and the foresight for easy servicing and maintenance. are evident.

Very few production trawlers can boast a reputation of being an easy vessel for a couple to manage and look after by themselves, the Krogen 39 fits this description. **Lady Di** is ready to go cruising and priced to move quickly. One more observation from Bill Parlatore in his *PassageMaker* article when she was introduced, "You really can't get much smaller and still have a vessel with the range and capacity for heading across an ocean in comfort."

**Lady Di** is a "secret" you need to see for yourself to truly appreciate. Please contact the listing brokers for a visit as all showings are by appointment only.

## **SPECIFICATIONS:**

<b>YACHT NAME:</b>	<b>LADY DI</b>
<b>BRAND AND MODEL:</b>	KADEY-KROGEN 39 (Flybridge)
<b>TYPE:</b>	Long range passage maker with raised pilothouse
<b>PRICE:</b>	\$280,000.00
<b>LOCATION:</b>	Vallejo, CA
<b>MODEL YEAR:</b>	1998
<b>HULL NUMBER:</b>	1
<b>HULL COLOR:</b>	White gel coat
<b>REGISTRY:</b>	United States Coast Guard documented
<b>DESIGNER:</b>	James Morrow Krogen
<b>BUILDER:</b>	Asia Harbor Yacht Builders – Kaohsiung, Taiwan ROC
<b>HULL MATERIAL:</b>	Fiberglass
<b>DISPLACEMENT:</b>	33,470 lbs.   15.18 MT
<b>BALLAST:</b>	2,000 lbs.   .9 MT
<b>RANGE:</b>	3,000 miles @ 6 knots
<b>SPEED:</b>	Cruise 6, Top 8.5 knots
<b>LOA:</b>	43'8"   13.31 M

## Kadey Krogen 39 Lady Di

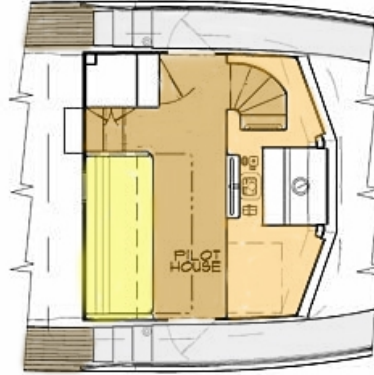
<b>LWL:</b>	36'8"   11.17 M
<b>LOD:</b>	38'11"   11.86 M
<b>BEAM:</b>	14'9"   4.49 M
<b>DRAFT:</b>	4'3"   1.29 M
<b>D/L:</b>	303
<b>A/B:</b>	2.6
<b>Cp:</b>	Prismatic Coefficient .60
<b>AIR DRAFT:</b>	22'   6.7 M mast   31'   9.45 M antenna (est.)
<b>MAIN ENGINE:</b>	John Deere 4045TFM 115 HP (Main hours: ~4,800) January, 2019
<b>TRANSMISSION:</b>	Twin Disc 2.39:1 reduction
<b>PROPELLER AND SHAFT</b>	24" three blade propeller   1.75" Aquamet 22 shaft
<b>EXHAUST:</b>	Wet exhaust
<b>THRUSTER:</b>	Lewmar 185TT, 12V/ 6kW Bow thruster
<b>ELECTRICAL:</b>	60 Hertz – US style - 50-amp service for house
<b>INVERTER/CHARGER:</b>	Freedom 20 inverter / charger with Link 2000 remote
<b>BATTERIES:</b>	(8) 6V Golf cart house batteries   8D engine start battery - All Trojan flooded
<b>CLIMATE CONTROL:</b>	Espar Airtronic diesel forced air furnace (saloon and stateroom)
<b>WINDLASS:</b>	Lewmar 12V electric
<b>GROUND TACKLE:</b>	SuperMax 64lb.   250' 3/8" chain   Bruce 66 lb. with chain/rode
<b>MAST &amp; BOOM:</b>	Painted aluminum spars with manual boom winches for dinghy
<b>TENDER AND OUTBOARD:</b>	West Marine 9' RIB with Honda 2 HP four stroke outboard
<b>NAV/COM:</b>	Raymarine   Icom   Simrad
<b>ENTERTAINMENT:</b>	24" TV/DVD in saloon
<b>STATEROOM:</b>	(1) Master forward
<b>HEAD:</b>	(1) Vacuflush (electric freshwater)
<b>SHOWER:</b>	(1) Master
<b>LAUNDRY:</b>	Splendide 7100XC clothes washer/dryer
<b>BILGE PUMPS:</b>	(4) Rule electric bilge pumps (Laz, ER, mid, forward)
<b>GALLEY:</b>	Force 10 propane three burner stove and oven   Tundra refrigerator/freezer   Microwave
<b>INTERIOR WOOD:</b>	Teak and white laminate
<b>INTERIOR COUNTERS:</b>	Corian counters
<b>INTERIOR UPHOLSTERY:</b>	Ultrasuede
<b>INTERIOR FLOORING:</b>	Teak and holly   parquet   carpet
<b>TANKAGE: (approx.)</b>	
<b>FUEL:</b>	700 gallons   2,649.8 L (2 aluminum tanks)
<b>HOLDING BLACK:</b>	35 gallons   132.5 L (1 plastic tank)
<b>FRESH WATER:</b>	300 gallons   1,135.6 L (3 stainless steel tanks)
<b>SAFETY:</b>	LifeSling   Soft pack life raft   EPIRB   Fire blanket   CO detectors
<b>PHOTO DATE:</b>	Most detail photos were taken in June, 2018



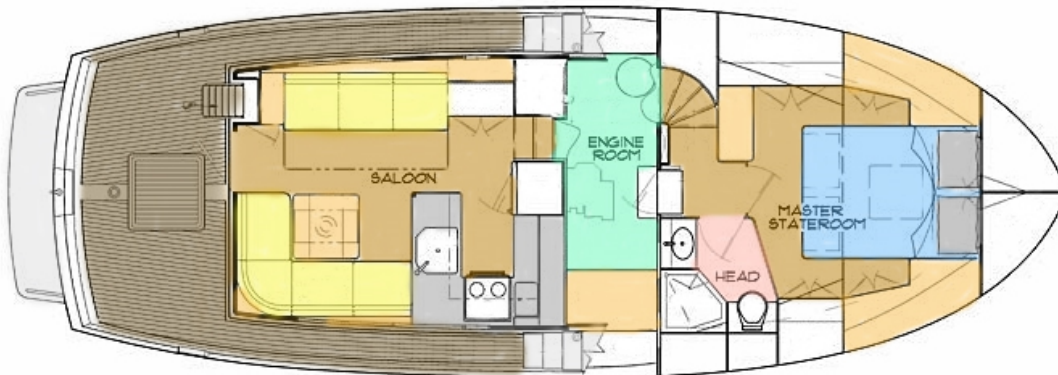
# Kadey Krogen 39 Lady Di

Note: Propeller is pitched for efficiency not for full RPM at wide open throttle.  
All information is believed accurate but should be verified.

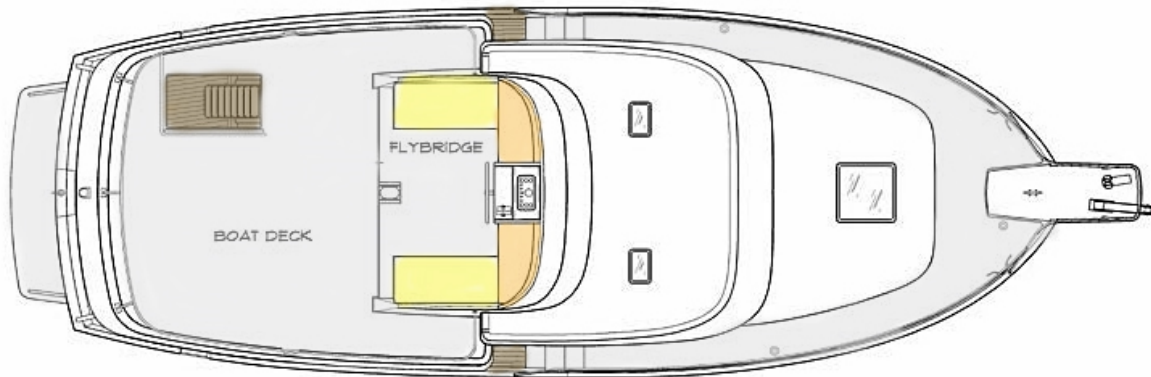
## LAYOUT: Pilothouse



## LAYOUT: Main Deck – Saloon, Galley, Stateroom



## LAYOUT: Flybridge



## Kadey Krogen 39 *Lady Di*

You can read all about the cruising accomplishments of the Krogen 39 on the internet, by studying magazine reviews and owner blogs. The detail photos of *Lady Di* were taken in July of 2018 (many more images are available by request- [contact the listing brokers\\*](#)).

Words, photos and a video can only tell part of the story and hopefully they will be enough to encourage you to take the next logical move and that is to step aboard and see *Lady Di* for yourself.

**Exclusions:** Potential purchasers should assume that items on the vessel at the time of viewing, but not specifically listed on this sheet, are not included with the sale of the yacht. These specifications are believed to be true and correct but cannot be guaranteed. Items excluded include, but are not limited to Paintings, tools, handheld nav gear and binoculars. Owner's personal effects and clothing will be removed prior to closing.

**Disclaimer:** Jeff Merrill Yacht Sales, Inc. presents the details of this vessel in good faith but cannot guarantee or warrant the accuracy of this information nor guarantee or warrant the condition of the vessel. Buyers should instruct their agents and their surveyors to investigate all details the buyers desire validated. This vessel is offered subject to prior sale, price change, or withdrawal without notice.

**Brokerage:** JMYS is a US based (licensed and bonded yacht brokerage in California and Florida) with an international emphasis specializing in ocean capable trawlers. Our brokers are experienced boaters, most are trawler owner/operators with thousands of hours and miles at sea. We treat our clients with respect, we are responsive and not pushy. Our focus is to become your loyal advocate, always looking out for your best interests. The team at JMYS has extensive trawler and motor yacht product knowledge and our skills are available for coaching after the sale has concluded.

**Co-Brokerage:** Fellow yacht broker association members: This listing is available for co-brokerage and JMYS is a 50/50 house. Courtesy showings are available by appointment. Florida listings subject to appropriate broker licensing required by law.

**\*Listing broker. Rob Piwowarczyk** All inspections are by appointment only. Please contact listing broker, **Rob Piwowarczyk** by phone, text or email for additional information or to schedule your personal showing. Rob is always available via Mobile +1 720.490.5662 (call or text). You can send a detailed Email to: [Rob@JMYS.com](mailto:Rob@JMYS.com).



Rob Piwowarczyk  
Member California Yacht Brokers Association

# Kadey Krogen 39 Lady Di

**\*Listing broker. Jeff Merrill, CPYB** (Certified Professional Yacht Broker) has extensive product knowledge of the trawler market and the Kadey Krogen brand. All inspections are by appointment only. Please contact listing broker, **Jeff Merrill, CPYB** by phone, text or email for additional information or to schedule your personal showing. Jeff is always available via Mobile +1 949.355.4950 (call or text). You can send a detailed Email to: [Jeff@JMYS.com](mailto:Jeff@JMYS.com).



Jeff Merrill, CPYB

Skype: jeff.merrill | Twitter: @merrillyachts

You Tube: Jeff Merrill Yachts | LinkedIn: jeff.merrill | Facebook: Jeff Merrill Yacht Sales

Instagram: jeffmerrilljmys

Certified Professional Yacht Broker - CPYB

**Licensed and Bonded in California and Florida**

Member California Yacht Brokers Association – President 2015 and 2016

Member International Yacht Brokers Association

Member Northwest Yacht Brokers Association

Member Yacht Brokers Association of America

