

Nordhavn 47 *NaviGator*



JEFF MERRILL
YACHT SALES, INC.

3010 Old Ranch Pkwy, Suite 440, Seal Beach, CA 90740
+1 949.355.4950 | www.JMYS.com

Florida address: Jeff Merrill Yacht Sales, Inc. | 1550 S.E. 17th St., Suite 3 | Ft. Lauderdale, FL 33316



NAVIGATOR

Asking: \$799,000.00 Location: Fort Lauderdale, FL

NaviGator is for sale by her original owners who ordered her specifically for long range coastal cruising. They gave careful consideration to all of the options that had been developed by the buyers of earlier hulls. As the 35th hull number in the series, *NaviGator* benefits from all of the major improvements developed over the first few years of production including the following and more; 24V electrical, full size watch berth in the pilothouse, opening hatch in the master stateroom; and the best equipment selections such as a Steelhead crane, Lugger wing engine and ABT TRAC active fin stabilizers - all important additions that simply were not available on earlier hulls.

Jeff Merrill Yacht Sales, Inc. © 2019 All Rights Reserved www.JMYS.com

Nordhavn 47 NaviGator

When the initial discussions for her order were planned the owners originally considered the larger Nordhavn 55 model, but quickly realized they didn't need all of the extra space (and surface area to maintain) and wisely pursued the perfect exceptionally outfitted Nordhavn 47 that did not crowd their budget.

The Nordhavn 47 standard boat pricing package was a very basic. Nearly all of the most popular available published options were purchased to complete **NaviGator**. The primary improvements and upgrades incorporated are: two cabin layout, flybridge with stainless framed top, fiberglass stack for the main engine exhaust and a crane for launching the dinghy. Many other subtle preferences were also incorporated such as the concealed flat screen television lift in the saloon and a Viking professional stove and oven in the galley.

With SidePower electric bow and stern thrusters they can dock safely in any marina and with their Rocna anchor and Water Makers, Inc. 400 GPD water maker they can anchor independently in the Bahamas for days on end in isolated splendor running the generator to power the air conditioner while snorkeling and enjoying the sun.

Very few yachts (sail or power) can compete with the capability of the Nordhavn 47 for comfort and reliability as a long distance, ocean-crossing vessel. Nordhavn 47 sisterships have crossed the Atlantic and Pacific oceans and it is considered routine to travel over 2,000 miles nonstop from port to port as dozens have done successfully. With over 50 hulls completed there are over one million miles traveled by Nordhavn 47s as reported in the PAE Distance Pennant Program.

NaviGator has a fantastic layout for an active owner operator couple. Her size is large enough for generous accommodations, but also appropriate for boat handling and managing maintenance.

Her interior layout features two staterooms and two heads. The engine room has standing headroom, for easier service inspections. The raised pilothouse with flybridge above gives a wonderful choice for commanding her underway. The entry level has a spacious saloon and an ideal offshore galley. Ultraleather upholstery, fitted carpet, custom blinds, granite counters and additional handrails enhance the luxury aboard.

YACHT NAME:	NaviGator
BRAND AND MODEL:	NORDHAVN 47 (flybridge with stainless frame top)
TYPE:	Long range passage maker with raised pilothouse
MODEL YEAR:	2005
HULL NUMBER:	35
HULL COLOR:	White gelcoat
REGISTRY:	United States Coast Guard documented
DESIGNER:	Jeff Leishman
BUILDER:	P.A.E./South Coast – Xiamen, China
HULL MATERIAL:	Solid Fiberglass
DISPLACEMENT:	85,000 lbs. 38.56 MT
BALLAST:	7,300 lbs. 3.31 MT (Lead)
RANGE:	3,000 miles @ 7.8 knots

Nordhavn 47 Navigator

SPEED:	Cruise 7.1 knots. Top 9.0 knots
LOA:	51' 15.55 M
LWL:	47' 4" 14.43 M
BEAM:	16' 1" 4.9 M
DRAFT:	6' 1" 1.85 M
D/L:	450
A/B:	2.5:1
Cp:	Prismatic Coefficient .61
AIR DRAFT:	35'0" 10.67 M to top of antennae (est.)
DECK:	White deck with tan nonskid
MAIN ENGINE:	Lugger 6068 TF275 170 HP (Main hours: ~4,835) February, 2019
TRANSMISSION	ZF 3.9:1 reduction transmission
PROPELLER / SHAFT	2.25" Aquamet 17 shaft Four blade propeller 34" x 32" Spurs line cutter
EXHAUST:	Dry stack, keel cooled
WING ENGINE:	Lugger L844D 40 HP (Wing hours: ~110.0) February, 2019
THRUSTER(S):	SidePower 24V/10 HP Bow thruster SidePower 24V/10 HP Stern thruster
STABILIZATION:	ABT 220 digital active fins, anchor flopper stopper on starboard side
ELECTRICAL:	60 Hertz – US style - 50 amp
SHORE POWER:	50-amp for house and 50-amp air con, 30-amp house (fore and aft).
GENERATOR:	Northern Lights 12 kW 240V 60Hz (Generator hours: ~3,100) Feb, 2019
INVERTER/CHARGER:	Xantrex 2500 Watt / charger Master Volt battery charger
BATTERIES:	Lifeline AGM
INTERIOR LIGHTING:	Cantalupi lighting
WATER MAKER:	Water Makers, Inc., ISL 400 (400 gallons / day)
CLIMATE CONTROL:	Cruisair air conditioning
MACHINERY EQUIPMENT:	Reverso oil changer
WINDLASS:	Maxwell VWC 3500 electric
GROUND TACKLE:	Rocna 55 150lb. 400' 1/2" high test chain Secondary Fortress
CRANE:	Steelhead SM 1500R - 1,500 pound
TENDER AND OUTBOARD:	Caribe DL 11 Honda 30 HP outboard
NAV/COM BRANDS:	Furuno Icom Simrad SeaTel
ENTERTAINMENT:	Flat screen TV in saloon on lift Flat screen TV in master Flat screen in pilothouse Bose speakers Stereo
STATEROOMS:	(2) Master aft, Guest cabin forward
BEDDING:	Custom mattress in master
HEADS:	(2) Raritan (electric freshwater)
SHOWERS:	(2) Master and Guest
LAUNDRY:	GE separate clothes washer and clothes dryer
GALLEY:	Viking professional propane 4 burner stove with propane oven SubZero refrigerator, freezer drawers SubZero freezer in forward stairway GE Dishwasher GE Convection microwave oven GE Trash compactor
INTERIOR WOOD:	Teak - matte, semi-gloss finish
INTERIOR COUNTERS:	Granite counters (many additional surfaces covered)

Nordhavn 47 NaviGator

INTERIOR UPHOLSTERY:	Ultraleather
INTERIOR FLOORING:	Teak and spruce hardwood
BILGE PUMPS:	Electric standard and electric highwater Edson manual
TANKAGE: (approx.)	
FUEL:	1,470 gallons 5564.6 L (fiberglass)
HOLDING BLACK:	120 gallons 454.2 L (fiberglass)
HOLDING GRAY:	110 gallons 416.4 L (fiberglass)
FRESH WATER:	400 gallons 1514.2 L (fiberglass)
ADDITIONAL EQUIPMENT:	Nutone central vacuum Stidd helm chairs Delta T ventilation fans in engine room Seagull IV water purifier NuTone central vacuum
SAFETY:	Engine room and lazarette SeaFire fire suppression Lifesling EPIRB
PHOTO DATE:	Most detail photos were taken in July, 2018
Note: All information is believed accurate but should be verified.	

Description:

Cockpit: The cockpit provides an outdoor space for fishing or relaxing. Enter aft from the swim platform or along the starboard side. You have a large hatch access to the lazarette below. There are shore power connections aft and forward. The cockpit shower is built in. The covered starboard side deck transits outside the saloon forward and up to the Portuguese bridge and foredeck and/or allows access into the entry level through her stout Dutch door.

Saloon: The saloon has comfortable bench seating to port and starboard with a custom moveable triangular high-low teak table. A flat screen television is incorporated into the starboard settee and a separate clothes washer and clothes dryer is concealed behind a louvered door forward to starboard just outboard of the stair way to the pilothouse. The interior is lively with beautifully matched teak joinery and additional installations of granite counters throughout.

Galley: The galley has been laid out with all of the essentials including a double basin sink with purified water tap, dishwasher, trash compactor and Sub-Zero refrigerator with freezer drawers. There is overhead storage and plenty of drawers for glasses, dishes, utensils and silverware. For preparing meals there is a convection microwave oven if you are rushed and a Viking Professional four burner propane stove and oven when you have time to prepare a sumptuous meal.

Pilothouse: The raised pilothouse has a Stidd helm chair for comfort and control underway with a bench seat and table behind and a large single watch berth aft and excellent visibility all around. There is an impressive assortment of navigation/communication electronics with controls for the bow and stern thruster, main engine, wing engine and generator. The electrical panel is installed in an easily accessed island panel with clearly labeled breakers and digital read outs. The Stidd helm chair provides an excellent station for the skipper on watch and there is seating aft with a teak table for crew and guests. Two Dutch doors open outboard to allow access to the Portuguese bridge deck – aft to port for the boat deck and flybridge and the starboard door provides entry to the foredeck or aft to the cockpit.

Landing: Going down a curved set of stairs you pass a built-in freezer and then reach the lower level landing where you can go forward to the guest cabin or aft to the master and engine room.

Nordhavn 47 NaviGator

Master Stateroom: For comfortable sleeping whether underway or at rest, the large master stateroom aft (below the pilothouse) features a large fore/aft island berth with custom mattress. There are hanging lockers and drawers to port. A flat screen television is mounted forward, just beneath the ventilation hatch. The master incorporates the ensuite head and shower and also provides immediate access to the engine room aft through a tall commercial door.

Guest Stateroom: The guest accommodations are forward with a double berth and an easily opened pipe berth "cot" above to port, a granite surface desk to starboard with a swivel chair and a private head and shower forward.

Engine Room: Few trawlers under 50' can boast standing headroom in the engine room. You can enter aft from the saloon floor or through the special ordered teak trimmed door in the master. The Luger main engine has safety rails and a work table atop and is keel cooled with dry stack exhaust. The aft section of the engine room has a Luger wing engine to port and Northern Lights generator to starboard. Forward you have access to both active fin stabilizers. The fiberglass main fuel tanks outboard are plumbed to a forward supply tank with valves and manifolds to supply, return and transfer fuel.

Lazarette: Aft in the engine room is a commercial door that enables entry to the lazarette where batteries, steering, the crane machinery, water maker, central vacuum and inverter are installed. Both the engine room and the lazarette are protected with built in fire suppression.

Foredeck: The foredeck, in front of the Portuguese bridge, is high off the water making for a dryer ride and has a Maxwell electric windlass with chain rode to a Rocna anchor. Chain locker access is through a Freeman hatch built into the self-draining anchor well. Shore power connections are on the foredeck and in the cockpit.

Portuguese Bridge: The Portuguese bridge leads aft on the port side up to the boat deck. There are portlights built in to the guest stateroom and storage lockers incorporated for easy access of gear stowage.

Boat Deck: The boat deck has a Steelhead crane centered with a Caribe RIB tender installed outboard to starboard. The dinghy is original equipment and has been actively used. This may be the only items aboard **NaviGator** that is showing her age, and a buyer could use her as is or for a nominal sum replace the inflatable hull tubes and have another decade or more of efficient water transport. With the tender launched it is a large outdoor deck space.

Flybridge: Up a short set of steps brings you to the flybridge with two Stidd helm chairs forward, aft bench seating, electronics and controls on the dash and the stainless framed and Stamoid covered top is draped on all sides with a clear enclosure that provides all-weather protection.

NaviGator has been used as a seasonal waterfront vacation home away from home for her experienced yachting owners. Cruising has enjoyed winters near their home in Fort Lauderdale, over to the Bahamas in the spring and north to New England for the summers with stops in Block Island, Nantucket and Martha's Vineyard have allowed and active cruising itinerary especially during the last four years once retirement started.

Nordhavn 47 NaviGator

NaviGator has been continually refined, proactively maintained and pampered with exceptional care and appears much younger than her true age in years. Service records for all major equipment are dutifully logged aboard and available for your perusal to factually confirm what your eyes are already telling you once you step aboard.

Now fully retired with grandchildren to entertain and more free time, a larger boat is beckoning (maybe it is time to rethink the Nordhavn 55 decision?) and as sad as it will be to see her sail away, the opportunity for her next owner to grab the torch is incredibly appealing for anyone seriously considering the purchase of an outstanding Nordhavn 47.

PAE, the builder, evolved the Nordhavn 47 into the Nordhavn 52 model (for hundreds of thousands of dollars more in cost) and made standard the flybridge, fiberglass stack and crane – just like **NaviGator**. Not everyone understands the other significant difference between these two siblings is the extended cockpit (and correspondingly larger lazarette) and some styling in the brow of the flybridge. Once you enter the saloon of either a 47 or a 52 the living spaces are identical, the only difference being owner requests for changes and options.

Highlighted Equipment aboard NaviGator

- Luger 6068TF main engine 170 HP – dry stack, keel cooled with 3.9:1 transmission
- Spurs line cutter on main engine shaft
- Luger L844D 40 HP wing engine
- 12kW Northern Lights generator with sound shield
- Reverso oil change system
- Lightning ground
- Cruisair air conditioning
- Xantrex inverter/charger with bypass
- Master Volt battery charger
- Lifeline AGM batteries (including two additional 8D's for house bank)
- Shore power connections forward and aft
- Delta T ventilation fans in engine room
- Sea Fire fire-suppression in engine room and lazarette
- ABT TRAC 220 active fin stabilizers – keel cooled
- Flopper stopper set up for starboard side
- Maxwell electric windlass, 400' of chain with chain stopper and Rocna anchor, plus bow tow eye
- 24V Sidepower bow and stern thruster (10.7 HP each)
- Steelhead SM1500R crane
- Caribe RIB with Honda 30 HP outboard
- Canvas covers for hatches, windows and windlass
- Watermakers, Inc. ISL 400 GPD water maker
- Scandvik cockpit hot cold fresh water shower
- Raritan fresh water toilets
- Custom mattress for master stateroom
- Custom fitted carpeting throughout

Nordhavn 47 NaviGator

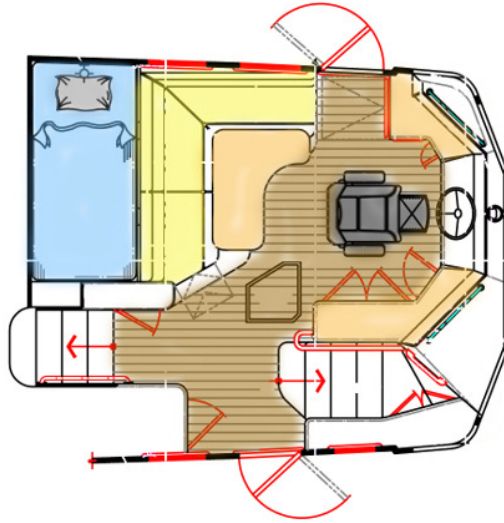
- Overhead hatches have Oceanaire roller screen/blinds
- Y-valve for galley sink overboard discharge
- Viking Professional four burner propane stove and oven
- Sub-Zero refrigerator with freezer drawers
- Additional freezer in forward stairwell
- (3) large propane tanks in cockpit locker
- GE Dishwasher
- GE Trash Compactor
- Flat screen television lift in saloon
- GE clothes washer and GE clothes dryer
- Custom teak dinette table with inlay in saloon
- Custom carpeting in all rooms
- Custom ordered granite counters on multiple surfaces including guest stateroom desk
- NuTone central vacuum
- (3) Stidd helm chairs – two on flybridge and one in pilothouse
- Flybridge clear view enclosure draped from stainless frame hard top
- New Bow Thruster battery (September 2018)
- New Stern Thruster battery (January 2019)
- **Note: People's Choice Award winner at Baltimore TrawlerFest, September 2018**

Detailed maintenance records confirming pride of ownership are available for review by request*.

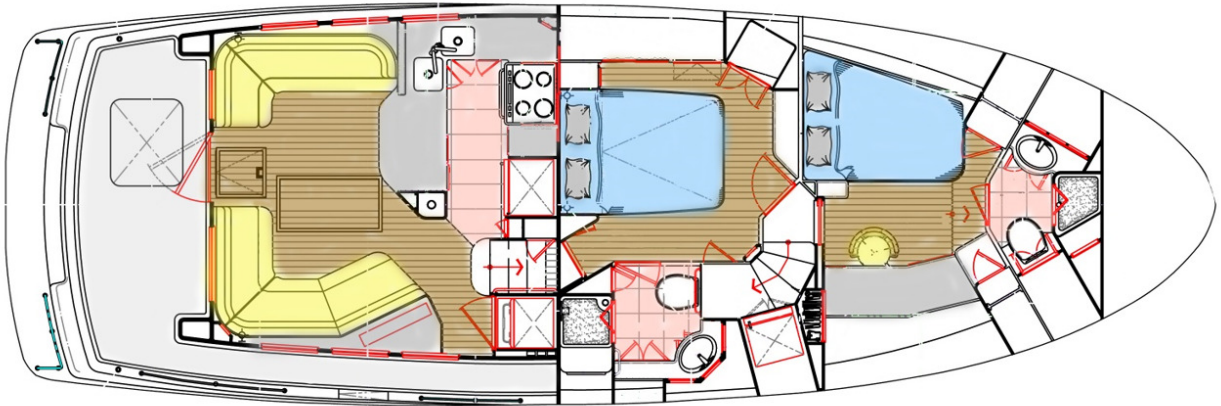
Note: Photos show the navigation and communication electronics which are comprised of top brands such as; Icom, Simrad, Furuno Navnet 2 with Time Zero, SeaTel primarily. For a summary list of pilothouse and flybridge nav/com please [contact the listing broker*](#).

Nordhavn 47 NaviGator

LAYOUT: Upper Deck Pilothouse



LAYOUT: Main Deck – Saloon, Galley, Staterooms



You can read all about the cruising accomplishments of the Nordhavn 47 on the internet by studying magazine reviews and owner blogs. The detail photos of **NaviGator** were taken in July of 2018 (many more images are available by request- contact the listing broker*).

Words, photos and a video can only tell part of the story and hopefully they will be enough to encourage you to take the next logical move and that is to step aboard and see for yourself. Once you see **NaviGator** in person we are sure you will appreciate her excellent condition and may then be convinced that she is the one for you.

Nordhavn 47 Navigator

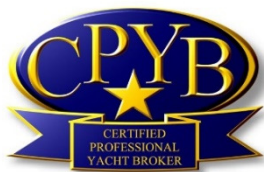
Exclusions: Potential purchasers should assume that items on the vessel at the time of viewing, but not specifically listed on this sheet, are not included with the sale of the yacht. These specifications are believed to be true and correct but cannot be guaranteed. Items excluded include, but are not limited to Paintings, tools, handheld nav gear and binoculars. Owner's personal effects and clothing will be removed prior to closing.

Disclaimer: Jeff Merrill Yacht Sales, Inc. presents the details of this vessel in good faith but cannot guarantee or warrant the accuracy of this information nor guarantee or warrant the condition of the vessel. Buyers should instruct their agents and their surveyors to investigate all details the buyers desire validated. This vessel is offered subject to prior sale, price change, or withdrawal without notice.

Brokerage: JMYS is a US based (licensed and bonded yacht brokerage in California and Florida) with an international emphasis specializing in ocean capable trawlers. Our brokers are experienced boaters, most are trawler owner/operators with thousands of hours and miles at sea. We treat our clients with respect, we are responsive and not pushy. Our focus is to become your loyal advocate, always looking out for your best interests. The team at JMYS has extensive trawler and motor yacht product knowledge and our skills are available for coaching after the sale has concluded.

Co-Brokerage: Fellow yacht broker association members: This listing is available for co-brokerage and JMYS is a 50/50 house. Courtesy showings are available by appointment. Florida listings subject to appropriate broker licensing required by law.

***Listing broker. Jeff Merrill, CPYB** (Certified Professional Yacht Broker) has extensive product knowledge of the trawler market plus intimate knowledge of the Nordhavn 47. He was the original salesperson for the order and delivery of *Navigator*. Jeff is a familiar face to YouTube viewers. This listing specification has been approved by the sellers for accuracy. The photos, images and descriptive content are copyrighted by JMYS and may not be copied or used without specific written permission. All inspections are by appointment only. Please contact listing broker, **Jeff Merrill, CPYB** by phone, text or email for additional information or to schedule your personal showing. Jeff is always available via Mobile (949) 355-4950 (call or text). You can send a detailed Email to: Jeff@JMYS.com.



Licensed and Bonded in California and Florida

Skype: jeff. merrill | You Tube: Jeff Merrill Yachts | Twitter: @merrillyachts | LinkedIn: jeff.merrill
Facebook: Jeff Merrill Yacht Sales | Instagram: jeffmerrilljmys | Yacht Brokers Association of America |
International Yacht Brokers Association (Florida) | Northwest Yacht Brokers Association |
California Yacht Brokers Association – President 2015 and 2016 Association



Jeff Merrill Yacht Sales, Inc. © 2019 All Rights Reserved www.JMYS.com