

Kadey-Krogen 44AE Sweet Ride



JMYS

3010 Old Ranch Parkway, Suite 440, Seal Beach, CA 90740
+1 949.355.4950 | www.JMYS.com

Jeff Merrill Yacht Sales, Inc. | 3321 SE 14 Avenue | Fort Lauderdale, FL 33316



Sweet Ride

Asking: \$879,000.00 Location: Vero Beach, FL

Kadey-Krogen 44AE Sweet Ride

\$20,000 Price Improvement in August 2020

Sweet Ride is a widebody Kadey-Krogen 44AE. The AE designation is for Advanced Ergonomics. The port and starboard boarding doors are at cockpit sole level, the engine room has two accesses including the lifting staircase. She has just completed major upgrades to hoisting system, cooling system, freshwater system, all sea strainers, navigation electronics, canvas, sound down, carpet and many others. She is equipped with a suite of navigation, communication and entertainment electronics that one would expect to find on much larger yachts. **Sweet Ride** is an accomplished blue water cruiser that is at home on the open sea as well as cruising the coastal waters. Her water maker, extensive spares, larger refrigerator and pantry space add to the ability to be self-sufficient in remote areas.

Sweet Ride has an excellent layout for an active owner operator couple. Her size is large enough for full time live aboard, and hosting occasional guests, but small enough for economical ownership and maintenance.

Her interior layout features two staterooms and single head. The engine room has two means of access for easier service and inspections. The raised pilothouse with flybridge above, both with Stidd helm chairs, provide two options for commanding her underway. The entry level has a comfortable saloon featuring two Ekornes Stressless chairs, L-shaped settee, and an ideal offshore gourmet galley. Ultra-leather upholstery, neutral colored curtains, and Corian counters.

New dinghy installed, June 2020. North Atlantic Inflatables brand with aluminum hull and inflatable Hypalon tubes. New Tohatsu / 9.9 HP outboard motor with electric start. Total weight (tender and outboard) approximately ~200 pounds. The light weight makes her fast through the water and easier to launch / retrieve.

DESCRIPTION:

Cockpit: The cockpit provides an enclosed outdoor space for relaxing with a cocktail or enjoying a meal. Open the enclosure for fishing underway or at anchor. Enter the cockpit from the aft swim platform or from either side boarding door. You have hatch access to the lazarette below. There are shore power connections aft and forward and a cockpit shower is built into the transom. The starboard side deck transits from the cockpit to the foredeck. Access to the interior is through her double weather-tight aluminum Diamond SeaGlaze saloon door.

Saloon: The saloon has a comfortable L-shaped settee to starboard in Ultra-leather and two Stressless chairs to port and a fixed mounted high-low teak table. The interior is bright and contemporary with satin finished cherry and teak and holly floors. An icemaker was added in 2015. New carpeting installed over heavy pad and Sounddown insulation (2019).

Galley: The gourmet galley has been laid out with all of the essentials including a deep basin Corian sink, purified water tap, GE refrigerator and freezer. There is overhead storage and ample drawers for glasses, dishes, utensils and silverware. For preparing meals there is a convection microwave oven and a Viking four burner propane range and oven. Additional storage to port for pots, pans and wine glasses.

Kadey-Krogen 44AE Sweet Ride

Pilothouse: The pilothouse offers excellent visibility all around from the Stidd helm chair, and a bench seat, that pulls out to a full size off watch berth. There is an impressive assortment of Simrad (2017& 2019) navigation/communication electronics with controls for the bow thruster, engine, and generator. The electrical panel is installed in an easily accessed panel to port with clearly labeled breakers and digital displays. Two aluminum Dutch doors open outboard to allow access to the side decks. The port door provides entry to the foredeck or aft to the boat deck and flybridge. The starboard door provides access to foredeck or aft to the cockpit.

Owner Stateroom: The owner stateroom features an island queen forward, two hanging lockers to port and starboard with six large drawers under berth. Eight drawers in the dresser to aft with mirror above. Deep storage is available under the berth with hydraulic lift. A flat screen television is mounted aft to starboard.

Engine Room: You can enter by lifting the stairs to the saloon or through hatch in sole of saloon. The John Deere main engine is mounted on centerline. The aft section of the engine room has a Northern Lights generator on center. The aluminum main fuel tanks outboard are plumbed to the main, generator and ESI fuel polisher/transfer system with supply and return. The engine room is protected by Fireboy fire suppression system (serviced 2019). Batteries are divided into three banks **all replaced in 2019**, house bank six Rolls AGM 6v 460AH, engine start 2 AGM Series 31, and generator start 2 AGM Series 34. Two Magnum inverter/chargers offer redundancy and faster charging of batteries. The Automatic Generator Start AGS (2018) ensures the batteries are charged properly even if the vessel is unattended.

Lazarette: Accessed via the cockpit hatch, provides ample storage space for fenders, cleaning supplies, fishing gear, and dive gear. The 700 gallons per day water maker and steering gear are also located within.

Foredeck: The foredeck on the Krogen 44AE is high off the water making for a dry comfortable ride and has a Maxwell 2500 hydraulic windlass with chain rode to a Rocna 40 88lb. anchor and a Manson Supreme 80lb. anchor with chain and 300 feet of nylon rode. Chain locker access is through the painted Freeman hatch on deck. Shore power and dock water connections are installed on the foredeck and in the cockpit. New canvas cover for windlass and canvas awning and support added in 2019.

Boat Deck: Proceeding aft from the port side brings you up to the boat deck and flybridge. The boat deck has a mast and boom for launching and retrieving a tender via two wireless controlled Warn electric hoists. All hoisting equipment replaced in 2019 including stainless steel wires and blocks.

Flybridge: Equipped with Stidd helm chair forward, seating to starboard, L-shaped settee to port, two Simrad MFD, electronics and stabilizer and anchor controls on the dash, all under the protection of a folding Bimini top. Whether docking, anchoring, or operating the vessel inshore on beautiful days, the flybridge offers commanding views and control that adds to the joy cruising.

Sweet Ride has been lovingly, maintained and upgraded. Service records for all major equipment are dutifully logged aboard and available for your perusal along with invoices for upgrades in 2019.

Exclusions: Owners personal items artwork and tools.

Detailed maintenance records confirming pride of ownership are available for review by request*.

Jeff Merrill Yacht Sales, Inc. © 2020 All Rights Reserved www.JMYS.com

Kadey-Krogen 44AE Sweet Ride

Highlighted equipment aboard Sweet Ride

Construction

- Hull and superstructure molds from high-grade female tooling.
- Hull construction includes use of USA-made, Cook® gel coat. Hand-laid Knytex® fiberglass construction with closed-cell PVC sandwich core used in topsides. Solid fiberglass below waterline with blister-resistant vinylester resin utilized on first two laminates below the waterline, with aramid fiber/FRP reinforcements.
- Superstructure includes end-grain balsa core and Knytex® surface mats for print-through reduction.
- Teak aft and side decks. Boat and fore decks have GripTex® non-skid finish. Bulwark has molded plank lines with gel coat finish.
- Polyurethane formulated marine sealants used at hull-to-deck, boat deck joints and exterior fittings.
- Marine-grade plywood bulkheads with molded fiberglass hat section stringers.
- Interior finished with handcrafted solid Cherry and veneers.

Galley

- Viking – 4 burner propane stove/oven
- GE refrigerator/freezer
- Large Corian sink
- Seagull water filtration system
- GE microwave convection oven
- Corian countertops

Navigation Electronics

Pilot House

- Simrad NSO evo2 Marine Processor Unit - Embedded Insight Cartography (America)
- OP40 wired remote - Controls up to four processors
- (2) MO16-T. 15.6" Widescreen monitors - High Definition 1366x768 resolution Pilothouse units
- 4G broadband radar for Simrad NSO, NSE and NSS series
- Simrad HALO 4 64-mile Open Array radar (2019)
- Simrad AP44 Auto Pilot (2019)
- Broadband sounder module (BSM-1)
- Autopilot pack standard VRF with AC42 Comp (High Current), RC42 rate compass NMEA2000 network interface
- WR20 remote commander system (wireless control autopilot)
- RPU300US, 12V drive Unit complete
- (2) VHF marine radios - RS35, DSC
- (2) ICOM SP-24 remote speakers for the (2) RS35 VHF radios
- VHF W/L handset, HS35, DSC (wireless use of both VHF's from Flybridge)
- (2) IS40 digital display
- GOFREE WIFI wireless module (Wi-Fi for using an iPad as a remote control and viewing of data on the NSO marine processor unit)
- GS25 antenna with built in rate compass. 10 Hz position update rate
- Airmar SS270W's "wide bean" (extra wide coverage). 1 kW HD digital sounder
- Maretron DSM-250 NMEA 2000 data repeater

Kadey-Krogen 44AE Sweet Ride

- Maretron ALM 100 - 110 DB warning sound system for “out of range” data on NMEA data bus
- Maretron WSO 100 Ultrasonic wind and weather
- AMEC (AIS) CLASS “A” transponder
- Personal computer running Coastal Explorer and connected to the auto pilot

Flybridge electronics

- MO16-T. 15.6" Widescreen High bright, multi-touch monitor. High Definition 1366x768 resolution. 1000 nit brightness
- NSS 12" Chart Plotter
- (2) IS40 Digital display
- OP40 Wired Remote - Controls up to four processors

Key components

- 700 GPD Watermakers Inc, water maker
- KVH M5 Sat TV system (serviced 2019)
- 3 LCD TVs Samsung
- 2 - HDTV Direct-TV Network black box systems to allow two different sat stations on any of the 3 LCD TVs.
- Over-The-Air antenna for local channels in HDTV
- Yamaha receiver, full 5 channel HI-Def surround sound
- Harmony remote to control all entertainment devices
- Custom installation of (6) high end "Kef" speakers includes subwoofer for surround sound
- Pep Wave MAX HD2 Ethernet router (2018), connected to an over the air Wi-Fi Rogue System and outside antenna, Ethernet router also allows use of 2 SIM cards to use as a whole yacht Wi-Fi system
- Remote controlled spotlight
- Asko clothes washer/dryer - full sized units
- (2) Ekornes leather chairs in saloon
- TV lift system for saloon TV on starboard side
- Full ships air conditioning and heating systems
- ESI fuel polishing system
- 9 kW Northern Lights generator in Sound shield (with ceramic coated stainless exhaust elbow 2019)
- Oil change system plumbed to main, transmission and generator
- ABT hydraulics package including TRAC stabilization, hydraulic Maxwell windlass and 15 HP bow thruster
- Forward shore power inlets
- Maretron Holding tank monitor
- Twin Magnum inverter/chargers set up for redundancy and high capacity charging
- Remote Racor fuel filtration gage in pilothouse
- (2) Rudder angle indicator in pilothouse and flybridge
- Custom mast/gooseneck system with two electric hoist winches, wireless control
- All LED lighting including running lights
- Stidd helm chairs in pilothouse and flybridge
- Maxwell chain counter
- Optional galley window

Kadey-Krogen 44AE Sweet Ride

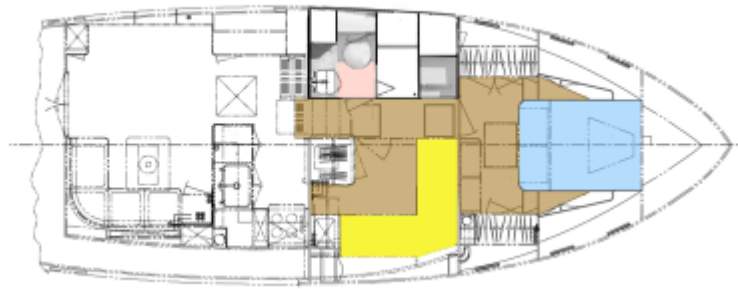
- Custom butcher block insert in galley counter
- (2) Seagull water purification systems
- Transom mounted blue underwater light
- 88 lb. Rocna anchor -all 3/8" chain rode primary
- 88 lb. Mason Supreme secondary anchor
- Additional "blue" LED deck lights
- LED deck lights
- Bimini top
- Bow tow eye
- GE convection microwave oven
- U-Line ice maker with custom cherry enclosure
- Engine room fire suppression system
- EPIRB mounted on flybridge
- Winslow 6-man life raft (repacked Jan 2019, reinstalled in marine canister with cradle)
- Spares for Main engine and generator
- Canvas covers outside seating, Bimini, windless, flybridge chair (2019)
- Cockpit enclosure (2018)
- Balmar 270-amp alternator
- Charles isolation transformer with switch for 208V (Boost) or 240V shore power
- Lifesling
- Fusion audio system with Sirius XM
- Satellite weather to all four Simrad monitors, not currently subscribed
- Snubber lines rigged to reduce anchoring scope
- Bridle for anchoring or mooring ball with snap shackle
- Stand-alone monitor for rear view camera system
- Explorer Satellite – Sat phone antenna installation and wiring to main helm (2019)
- Headhunter Mach V freshwater pump (2019)
- Whale drain/sump pump (2019)

Kadey-Krogen 44AE Sweet Ride

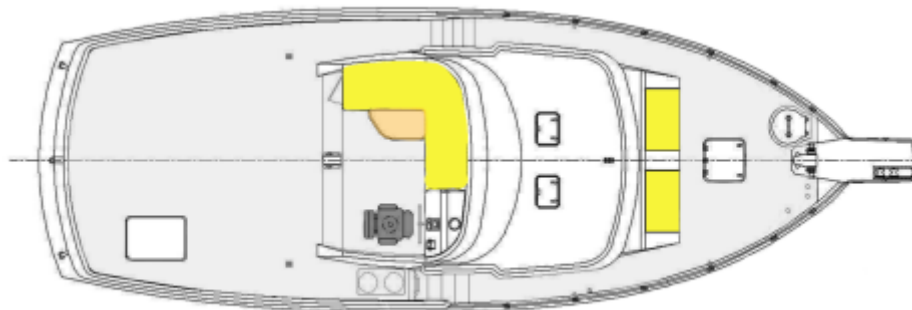
LAYOUT: Saloon, Galley and Pilothouse



LAYOUT: Staterooms and head



LAYOUT: Boat Deck and Flybridge



Kadey-Krogen 44AE Sweet Ride

SPECIFICATIONS:

YACHT NAME:	<i>Sweet Ride</i>
BRAND AND MODEL:	Kadey-Krogen 44AE (Flybridge with Bimini top)
TYPE:	Long range passage maker with raised pilothouse
LOCATION:	Stuart, FL
MODEL YEAR:	2014
HULL NUMBER:	28
HULL COLOR:	White gelcoat
REGISTRY:	United States Coast Guard documented
DESIGNER:	Jim Krogen
BUILDER:	Asia Harbor Yacht Builders Co., Ltd.
HULL MATERIAL:	Solid Fiberglass
DISPLACEMENT:	43,140 lbs. 19.56 MT
BALLAST:	2,500 lbs. 1,134 KG (Lead)
RANGE:	3,000 miles @ 7 knots
SPEED:	Cruise 7.6 knots. Top 9.0 knots
LOA:	49' 14.93 M
LWL:	40' 11" 12.44 M
BEAM:	16' 4" 4.98 M
DRAFT:	4' 6" 1.37 M
D/L:	283
A/B:	2.9:1
Cp:	Prismatic Coefficient .607
AIR DRAFT:	25'0" 7.62 M to top of antennae (estimate)
DECK:	White deck with beige nonskid
MAIN ENGINE:	John Deere 6068 TFM75 158 HP (Main hours: ~2,784) Aug 2020
TRANSMISSION	Twin Disc Model MG5061 3.0:1 reduction gear
PROPELLER / SHAFT	2" Aquamet 22 shaft Four blade propeller 28" x 24.5" Spurs line cutter
EXHAUST:	Wet exhaust, Centek Vernalift muffler
THRUSTER:	TRAC/ABT Hydraulic 15 HP Bow thruster
STABILIZATION:	ABT 220 Digital Active Fins
ELECTRICAL:	60 Hertz – US style - 50 amp
SHORE POWER:	50 amp and 30 amp (fore and aft).
GENERATOR:	Northern Lights 9 kW 240V 60Hz (hours: ~1,189 Aug 2020)
INVERTER/CHARGER:	(2) Magnum 2800-Watt inverter/charger
BATTERIES:	Rolls AGM 1245 AH house bank (all batteries replaced 2019)
INTERIOR LIGHTING:	Cantalupi lighting LED
WATER MAKER:	Water Makers, Inc., ISL 700 (700 gallons a day)
CLIMATE CONTROL:	Cruisair Air Conditioning

Kadey-Krogen 44AE Sweet Ride

MACHINERY EQUIPMENT:	Reverso Oil changer
WINDLASS:	Maxwell 2500 Hydraulic
GROUND TACKLE:	Rocna 40 88 lbs. 300' 3/8" high test chain Secondary Manson Supreme 40 88 lbs. w/25' chain, 300' 1/2" nylon rode
MAST AND BOOM:	Painted aluminum mast and boom for antenna mounting and dinghy lifting
TENDER AND OUTBOARD:	10.5' North Atlantic Inflatables with aluminum hull Tohatsu 9.9 HP engine (June 2020)
NAV/COM BRANDS:	Simrad B&G KWH Simrad Open array (2019)
ENTERTAINMENT:	Samsung flat screen TV in saloon on lift Samsung flat screen TV in owner Samsung flat screen in Guest/Office KEF speakers Stereo
STATEROOMS:	(2) Owner forward, Guest cabin amidships
BEDDING:	Custom mattress in Owner
HEAD:	Dometic MasterFlush (Electric freshwater)
SHOWER:	Single with folding door
LAUNDRY:	ASKO separate clothes washer and clothes dryer
GALLEY:	Viking professional propane 4 burner stove with propane oven GE refrigerator U-Line icemaker GE Microwave convection oven
INTERIOR WOOD:	Cherry - matte, semi-gloss finish
INTERIOR COUNTERS:	Corian counters
INTERIOR UPHOLSTERY:	Ultraleather
INTERIOR FLOORING:	Teak and spruce hardwood
BILGE PUMPS:	Electric standard and electric highwater
TANKAGE: (approx.)	
FUEL:	850 gallons 3217 L (Aluminum)
HOLDING BLACK:	52 gallons 197 L (Fiberglass)
FRESH WATER:	300 gallons 1136 L (Stainless Steel)
ADDITIONAL EQUIPMENT:	Stidd helm chairs (Pilothouse and Flybridge) (2) Man Ship ventilation fans in engine room (2) Seagull IV water purifiers (Galley and Head) Dive Compressor in lazarette
SAFETY:	Engine room FireBoy fire suppression Lifesling EPIRB Winslow Life raft
PHOTO DATE:	Most detail photos were taken in October 2019
Note:	All information is believed accurate but should be verified.

Kadey-Krogen 44AE Sweet Ride

For additional information please visit the *Sweet Ride* website, www.kadeykrogen44.com



The detail photos of *Sweet Ride* were taken in October of 2019 (many more images are available by request- contact the listing broker*). We encourage you to get in touch so we can discuss her in detail and set up an appointment so that you can step aboard and see for yourself. Once you see *Sweet Ride* in person, we are sure you will appreciate her excellent condition.

Exclusions: Potential purchasers should assume that items on the vessel at the time of viewing, but not specifically listed on this sheet, are not included with the sale of the yacht. These specifications are believed to be true and correct but cannot be guaranteed. Items excluded include, but are not limited to Artwork, tools, handheld navigation gear and binoculars. Owner's personal effects and clothing will be removed prior to closing.

Disclaimer: Jeff Merrill Yacht Sales, Inc. presents the details of this vessel in good faith but cannot guarantee or warrant the accuracy of this information nor guarantee or warrant the condition of the vessel. Buyers should instruct their agents and their surveyors to investigate all details the buyers desire validated. This vessel is offered subject to prior sale, price change, or withdrawal without notice.

Brokerage: JMYS is a US based (licensed and bonded yacht brokerage in California, Florida and Washington) with an international emphasis specializing in ocean capable trawlers. Our brokers are experienced boaters, most are trawler owner/operators with thousands of hours and miles at sea. We treat our clients with respect, we are responsive and not pushy. Our focus is to become your loyal advocate, always looking out for your best interests. The team at JMYS has extensive trawler and motor yacht product knowledge and our skills are available for coaching after the sale has concluded.

Kadey-Krogen 44AE Sweet Ride

Co-Brokerage: Fellow yacht broker association members: This listing is available for co-brokerage and JMYS is a 50/50 house. Courtesy showings are available by appointment. Florida listings subject to appropriate broker licensing required by law.

***Listing broker. Christopher Bruce**, (Licensed Florida Yacht Broker) has extensive product knowledge of the trawler market plus intimate knowledge of the Kadey-Krogens. All inspections are by appointment only. Please contact listing broker, **Christopher Bruce** by phone, text or email for additional information or to schedule your personal showing. Christopher is always available via Mobile (+1 603.397.8397 (call or text). You can send a detailed Email to: Christopher.Bruce@JMYS.com



Mobile phone: +1 603.397.8397 – call or text

Email: Christopher.Bruce@JMYS.com

Licensed and Bonded in Florida

