

Nordhavn 47 SEABIRD



JMYS

3010 Old Ranch Parkway, Suite 440, Seal Beach, CA 90740
+1 949.355.4950 | www.JMYS.com

Jeff Merrill Yacht Sales, Inc. | 3321 SE 14 Avenue | Fort Lauderdale, FL 33316



SEABIRD

Asking: \$850,000.00 Location: Santa Barbara, CA

SEABIRD is for sale by her original owners who traded their Sparkman and Stephens sailboat in to embrace life under power with a solid vessel that could take them anywhere. They took delivery in California and have traveled north to Alaska, spending a couple of years in the Northwest before heading south back to California, on to Mexico and then exploring Central America. Cutting through the Panama Canal they ventured through the Caribbean and then used Florida as their stepping off place to

Nordhavn 47 SEABIRD

sail eastward. **SEABIRD** crossed the Atlantic on her own bottom. Two glorious years were spent cruising the Mediterranean before shipping back to the US as on deck cargo aboard a freighter due to other commitments. A veteran of four different summer trips to Alaska and extensive cruising that included ocean passages, island hopping and exploring remote coves and isolated shores. She eventually meandered back to their home port of Santa Barbara, an appropriate and special home for this wonderful trawler. Since 2018, **SEABIRD** has enjoyed a more coastal lifestyle with many adventures along the US west coast, the California Channel Islands becoming the preferred location to get away. **SEABIRD** has travelled more than 40,000 miles.

SEABIRD is hull number 50 of this incredibly popular design. She is a 2007 model year, commissioned for delivery and handed over for first use in 2008. The most commonly desired features for a 47 are: flybridge with fiberglass stack and crane and two-stateroom, two-head interior layout. **SEABIRD** has these popular features and much more.

The international appeal of this, “the largest small Nordhavn”, found a growing market in Europe and Australia. The owners of **SEABIRD** used their own sailing offshore experiences and intelligent observations of how other 47’s were outfitted to order a spectacular package which has served them well. The Nordhavn 47 was continually improved during her production years and **SEABIRD** is the beneficiary of those sister ships who preceded her. It is not easy to compare 47’s from different model years because of the number of choices, changes and refinements.

She is one of the last five to be built and delivered in the U.S. Significant improvements developed over the first few years of production include the following; 24V electrical, full size watch berth in the pilothouse, opening hatch in the master stateroom; and availability of the best equipment selections such as a Steelhead crane, improved Northern Lights generator panels, Lugger wing engine, fiberglass stack enclosure for the dry stack exhaust, saloon flat screen television lift and ABT TRAC active fin stabilizers - all important additions that simply were not available on earlier hulls. She also has SidePower electric bow and stern thrusters for safe and sure arrival in any marina. With her Village Marine 600 GPD water maker, generator and air conditioning, abundant storage for provisions and Sub-Zero refrigeration and freezers you can anchor remotely and enjoy life away from civilization for extended periods of time.

The cockpit and starboard side deck connect up some steps to the Portuguese bridge and foredeck level and then the deck wraps around to port for access to the boat deck and flybridge. Inside the entry level begins with a roomy saloon (extra space due to her widebody design) and connects with the galley forward to port. Up a short flight of steps brings you to her raised pilothouse which includes a Stidd helm chair and excellent access to nav/com and electrical controls. There is a bench seat and watch berth aft in the pilothouse. The lower level living areas are reached by the slightly curved stair case on the starboard side. There is a landing area with the choice of going forward to the guest stateroom with double bed, pipe berth, desk, shower and head or aft to the owner cabin with island berth and head with stand up shower to starboard. The door aft in the owner cabin provides the easiest access to the engine room. The engine room has standing headroom forward for easy access and convenience surrounding the Lugger main engine. The generator, wing engine and fuel manifolds are easy to reach and from this machinery space you can head back to the lazarette through a connected door.

Very few yachts (sail or power) can compete with the capability of the Nordhavn 47 for comfort and reliability as a long distance, ocean-crossing vessel. Nordhavn 47’s have amassed thousands of miles

Nordhavn 47 SEABIRD

offshore, crossing the Atlantic and Pacific oceans with regularity and minimal issues (or fanfare). One of the 47's strongest appeals is that her size allows for generous accommodations, but is not too large, she is an ideal vessel for two people to handle, manage and enjoy.

SEABIRD is a late model, original owner, veteran Nordhavn 47 awaiting the next adventurous owner operator couple who wish to take off without doubt...and perhaps without ever looking back.

SPECIFICATIONS:

YACHT NAME:	<i>Seabird</i>
BRAND AND MODEL:	NORDHAVN 47 (flybridge with stainless framed top)
TYPE:	Long range passage maker with raised pilothouse
PRICE (US\$):	\$850,000.00
LOCATION:	Santa Barbara, CA
MODEL YEAR:	2007
HULL NUMBER:	50
HULL COLOR:	Gray gelcoat
REGISTRY:	United States Coast Guard documented
DESIGNER:	Jeff Leishman
BUILDER:	P.A.E./South Coast – Xiamen, China
HULL MATERIAL:	Solid Fiberglass
DISPLACEMENT:	85,000 lbs. 38.56 MT
BALLAST:	6,000 lbs. 2.7 MT (Lead)
RANGE:	3,000 miles @ 7.8 knots
SPEED:	Cruise 7.1 knots. Top 9.0 knots
LOA:	51' 15.55 M
LWL:	47' 4" 14.43 M
BEAM:	16' 1" 4.9 M
DRAFT:	6' 1" 1.85 M
D/L:	450
A/B:	2.5:1
Cp:	Prismatic Coefficient .61
AIR DRAFT:	35'0" 10.67 M to top of antennae (est.)
DECK:	White deck with gray nonskid
MAIN ENGINE:	Lugger L1066T 173 HP (Main hours: ~6,755) September 2020 ZF Mathers Micro Command wired shift pilothouse and flybridge Duplex Racor 75/900 MAX fuel filter
TRANSMISSION	ZF W220 3.9:1 reduction transmission
PROPELLER / SHAFT	2.25" Aquamet 22 shaft Four blade propeller 34" x 32" Spurs line cutter
EXHAUST:	Dry stack, keel cooled

Nordhavn 47 SEABIRD

WING ENGINE:	Lugger L844D 40 HP ZF V-drive 2.99:1 (Wing hours: ~80.0) September 2020 Teleflex-Morse control cable shift Racor 220 R fuel filter 10-gallon aluminum day tank
THRUSTERS:	SidePower SP115 TC 24V Bow and Stern thruster Dual joystick controllers - pilothouse and flybridge
STABILIZATION:	ABT TRAC 220 digital active fins, flopper stopper rig on port side
STEERING:	Hynautic hydraulic with ram Backup emergency tiller (with bypass)
ELECTRICAL:	60 Hertz – US style - 50 amp
SHORE POWER:	50 amp for house and 50 amp air con, 30 amp house (forward) 50 amp house (aft)
GENERATOR:	Northern Lights 16 kW M844W2 240VAC 60Hz (Generator hours: ~890) September 2020 Racor 500 MA fuel filter Sound shield enclosure
INVERTER/CHARGER:	Xantrex Trace SW4024MC2 4kW inverter / charger Inverter bypass Victron Centaur 12/20 battery charger Communications battery charger
BATTERIES:	Lifeline AGM
INTERIOR LIGHTING:	Cantalupi lighting
WATER MAKER:	Village Marine Squirt SPW 600 (600 gallons / day)
CLIMATE CONTROL:	Cruisair 48,000 BTU air conditioning with reverse cycle heating
MACHINERY EQUIPMENT:	Walbro fuel transfer pump with Racor 900 MA filter Reverso GP 3013 24V oil changer for main, wing and generator
WINDLASS:	Maxwell VWC 3500 24V electric, vertical capstan with gypsy Foot buttons on foredeck Controls in pilothouse and on flybridge Chain stopper on foredeck
GROUND TACKLE:	CQR 110 lb. primary 400' 7/16" high test chain Danforth 40 lb. secondary with chain and rode Spare 35 lb. plow with detachable shank Stainless steel bow eye 12" above waterline
CRANE:	Steelhead SM 1500R - 1,500 pound
TENDERS AND OUTBOARDS:	Nautica DL 11 RIB with Honda 40 HP outboard Avon Rover 3.10 RIB (beaching wheels) with Honda 8 HP outboard
NAV/COM BRANDS:	Furuno Icom Simrad Vei
ENTERTAINMENT:	Samsung 23" flat screen TV on lift in saloon Blu-Ray DVD player Wired for TV in master and pilothouse Sony stereo pilothouse display Polk Audio surround sound music system with speakers and subwoofer in saloon and cockpit ONKYO TX-SR 505 AM/FM stereo system with amplifier
STATEROOMS:	(2) Owner aft Guest forward
BEDDING:	Custom mattress topper Owner bed
HEADS:	(2) Tecma 39097 Silence Plus (electric freshwater)
SHOWERS:	(2) Owner and Guest (stand up with hinged door) (1) Cockpit
LAUNDRY:	ASKO W6461 clothes washer ASKO T711 clothes dryer

Nordhavn 47 SEABIRD

GALLEY:	GE Profile (4) burner propane stove and electric oven SubZero refrigerator, freezer drawers Double basin stainless steel sink including Insinkerator disposal with y-valve GE Convection microwave oven GE Trash compactor SubZero freezer in forward stairway
INTERIOR WOOD:	Teak - matte, semi-gloss finish
INTERIOR COUNTERS:	Granite counters
INTERIOR UPHOLSTERY:	Ultraleather
INTERIOR FLOORING:	Teak and spruce hardwood
BILGE PUMPS:	Electric Jabsco standard Electric Rule highwater submersible Edson manual
TANKAGE: (approx.)	
FUEL:	1,480 gallons 5,600 L (fiberglass primaries, aluminum supply and day)
HOLDING BLACK:	120 gallons 454 L (fiberglass) Deck pump out Electric and manual discharge
HOLDING GRAY:	110 gallons 416 L (fiberglass) Deck pump out Electric and manual discharge
FRESH WATER:	400 gallons 1514 L (fiberglass)
ADDITIONAL EQUIPMENT:	Stidd helm pilothouse (2) Prime helm chairs flybridge NuTone central vacuum Maxwell VC1000 electric cockpit capstan Olsun 7.5 kVA isolation transformer Olsun boost transformer
SAFETY:	SeaFire fire suppression self-actuating in engine room FE-241 and lazarette FE-350M with remote manual activation Avon 8-person life raft EPIRB Kahlenberg K-380 compressor horn
PHOTO DATE:	Most detail photos were taken in September, 2020
Note: All information is believed accurate but should be verified.	

DESCRIPTION:

Cockpit: The cockpit provides an outdoor space for fishing or relaxing. You can enter aft from the swim deck or along the starboard side mid lower deck. The swim deck is really a lower deck platform for easy water access by tender, kayak or swimming. It has a large hinged swim ladder with two U-rails aft serving as fencing and two L-rails outboard for boarding and hand support.

A large built in hinged entry door securely divides the swim deck from the cockpit. The cockpit is a long and wide mostly covered overhead outdoor area. There is a large hatch access to the lazarette below. A 50-amp shore power connection allows flexibility with docking positions. A practical Maxwell electric warping winch is mounted in the transom. The cockpit shower (hot/cold freshwater) is placed for a rinse after a dip. The covered starboard side deck transits outside the saloon forward and up to the Portuguese bridge and foredeck and/or allows access into the saloon entry level through her stout Dutch door.

Nordhavn 47 SEABIRD

- (2) L-shaped handrails on transom
- (2) "U" shaped removable stanchions on swim step
- Stainless steel swim ladder mounted on swim step with fiberglass treads
- Scandvik hot and cold cockpit shower
- Additional propane tank; (3) propane tanks in locker with propane gas sensing system. (1) tank dedicated for BBQ
- Sovereign Marine stainless-steel BBQ with mounts on port cockpit
- Maxwell 1000 electric warping winch
- Storage locker for outdoor supplies
- Music speakers selectable and mounted in cockpit overhead
- Hawes pipes with cleat horns
- 50-amp house shore power connection
- Diesel fuel fills and vents
- Cockpit transom door
- Starboard side boarding door

Saloon: The saloon has comfortable bench seating to port and starboard with a fixed teak table on the starboard side ideal for dining. A flat screen television is incorporated forward into the starboard settee. A separate clothes washer and clothes dryer is concealed behind a louvered door forward to starboard just outboard of the stairway to the pilothouse. The interior has beautifully matched teak joinery surrounding and teak/spruce floors. The below decks living areas all enjoy air conditioning.

- Crown molding throughout
- Teak and spruce floors throughout
- Cantalupi overhead lighting throughout
- Airconditioning in living spaces
- Marine air reverse cycle air conditioning and heat with digital controls
- Custom wood blinds in saloon and pilothouse
- Dutch door aft
- Overhead stainless handrail
- Settee built in seating on port side of saloon
- Additional food storage space under settees
- L-shaped seating on starboard side of saloon
- Teak dinette table
- Starboard settee has built in TV lift and is prewired for a future display in the pilothouse and owner's stateroom
- Samsung 23" flat screen television
- Polk Audio surround sound with subwoofer and speakers in saloon and cockpit.
- ONKYO TX-SR 505 AM/FM stereo system with amplifier
- Blu-ray/DVD blue ray/DVD
- Stacked Asko clothes washer and Asko dryer - 220 volt
- Additional food storage space under settees

Nordhavn 47 SEABIRD

Galley: The galley has been laid out for easy meal preparation with granite counters and a double basin stainless steel sink. Appliances include a trash compactor and Sub-Zero refrigerator with freezer drawers. There is overhead storage and sliding locker alcove access forward of the stove. Plenty of drawers for glasses, dishes, utensils and silverware. For preparing meals there is a microwave oven if you are rushed and a GE dual fuel four burner propane cook top and electric oven for more involved meals.

- Marine air reverse cycle air conditioning and heat with digital controls
- Granite countertops
- Galley counter backsplash
- Additional galley storage pantry lockers inboard
- Three cabinets are behind the cook top are for large pots storage
- The cabinet adjacent to the sink has four additional storage drawers
- Double basin stainless steel sink with Grohe faucet
- Insinkerator garbage disposal (with y-valve to tank or overboard)
- Subzero 700TCI refrigerator with ice maker and freezer drawers
- GE stainless
- s steel stovetop – 110V starter LPG Includes pot secure rails and arms
- GE stainless steel oven 240V
- GE stainless steel Spacesaver XL 1800 microwave oven
- GE stainless steel trash compactor
- Drop down access compartment storage in stairwell step to pilothouse

Pilothouse: The raised pilothouse is surrounded by windows for an impressive view of your surroundings. Front and center, a Stidd helm chair provides comfort and easy access to controls while underway. There is an impressive assortment of navigation/communication electronics within reach and controls for the bow and stern thruster, windlass, watermaker, main engine, wing engine and generator. The electrical breaker panel is installed in a convenient island panel with clearly labeled breakers and digital read out displays. There is seating aft and up high, behind the operations console with a bench seat and teak table for crew and guests. Across the port aft bulkhead is a large single watch berth. Two Dutch doors open outboard to allow access to the side decks: starboard and forward to the Portuguese bridge deck – aft to port for the boat deck and flybridge.

- Four steps up from entry level with additional overhead handhold from pilothouse to galley
- Hand holds on both sides to galley and forward to lower staterooms
- Nordhavn safety alarm panel – water in fuel, fire suppression
- Marine air reverse cycle air conditioning and heat with digital controls
- Stidd 500N-2x2 “Slimline” Admiral helm chair, metal pedestal with Ultraleather
- Lugger main engine display
- SPT II Mathers electronic engine control in Pilothouse and flybridge

- Remote Mathers engine control pod for port, starboard and aft cockpit remote boat engine control; and for both thrusters
- Lugger wing engine display
- Double lever Morse controls for wing engine
- ABT Trac active fin stabilizer control panel
- Northern Lights generator display

Nordhavn 47 SEABIRD

- Xantrex inverter display
- SidePower bow and stern thruster joy stick controls
- Dutch doors port and starboard
- (2) VEI 15" Marine displays in pilot house
- Furuno NavNet System
- NavNet navigation plotter cards for North America, Alaska, Central America, Azores and Mediterranean
- Furuno Network Sounder DFF1 with 1kW transducer
- Separate Furuno depth sounder from network sounder
- Furuno DRS12A UHD Digital Radar 12 kW with 4' open array
- Second Furuno 36NM dome radar
- Furuno SC 50 GPS compass (satellite compass)
- Furuno GP-32 GPS (switch between satellite and this one)
- Furuno BBW GPS/WASS antenna
- AIS System interfaced to NavNet displays
- Furuno MDFBB NavNet Black Box System each NavNet system
- ICOM IC M802 marine radio with AT-140 auto tuner
- ICOM 735 ham radio (SSB) with AH-2 auto tuner
- ICOM M604 VHF
- Hailer Horn SPC-40
- Coax switch for Shakespeare antenna between marine and ham radio
- Modem for computer weather fax: SCS 1061 PACTOR II with USB III output
- Simrad AP 50 Autopilot with Accusteer HPU100 CRP (2 each for redundancy backup)
- Ritchie compass SS-2000 4.5" card
- Airmar wind system WS PB100G
- Iridium 9905 handheld Sat phone with cradle and antenna
- CCTV digital camera in engine room displayed with installed TV in PH
- Large screen TV mounted starboard side of instrument panel for display of: engine room camera, saloon blue ray/DVD player, rear camera, (infrared camera if installed) and as back up if either VEI display becomes unserviceable; all inputs switchable with rotary coax switch
- Computer interfaces from pilothouse electronics providing laptop display in pilothouse, saloon, owner stateroom and forward stateroom. Wired with selectable interface to provide navigation from laptop if desired.
- EPIRB satellite emergency radio ACR Cat II

Forward stairs landing: Going down a curved set of teak steps you pass the built-in freezer and then reach the lower level landing where you can go forward to the guest stateroom or aft to the owner's stateroom.

- Subzero Model #249FF-RH stairway freezer
- Safety gear storage in locker
- Access for manual black and gray water pump outs
- Locker for cell phone charging etc.

Nordhavn 47 SEABIRD

Owner's Stateroom: For a quiet place to sleep and relax, the spacious owner's stateroom features a queen-sized fore/aft island berth with comfortable mattress topper. Being aft it is less prone to motion underway and quieter at anchor. To port there are two hanging lockers and a bank of drawers (with a hinged laundry hamper). There are additional drawers under the bed. The bed lifts on a hinge to reveal a huge space for additional long-term storage. Forward is a dresser with drawers, a mirror, and a ventilation hatch above provides light and ventilation. The owner's stateroom includes a convenient head and shower outboard to starboard and also provides immediate access to the engine room aft through a tall commercial door with teak trim and a viewing window.

- Queen sized island berth with mattress topper
- Bed hinged aft for access to deep storage
- Marine air reverse cycle air conditioning and heat with digital controls
- Computer interface to NavNet
- Counter surfaces on bed stands, forward dresser and outboard hanging locker
- Hanging lockers
- Multiple drawers
- Book shelves
- Laundry hamper
- Overhead opening hatch to Portuguese bridge for light and ventilation
- Opening portlights outboard to port
- Large mirror on forward bulkhead above dresser
- Door to engine room with teak veneer and viewing window
- Head with granite counters and recessed sink with faucet
- Tecma Silence Plus freshwater head
- Stand up shower with built in seat and bi-fold door
- Opening portlight outboard
- Tank watch level sensors
- Teak and spruce sole in stateroom
- Slate tiles on head floor

Guest Stateroom: The guest accommodations are forward. Sleeping two on the double berth with an extra convenient pipe berth "cot" above to port. Hanging lockers forward on both sides and a convenient built in desk to starboard with a swing out chair. Plenty of lockers and storage spaces. The bow section has a private head and shower.

- Marine air reverse cycle air conditioning and heat with digital controls
- Double wide berth to port
- Drawers under bed
- Pipe berth cot in concealed shelf to port
- Office layout with desk layout with swinging seat, drawers and bookshelves above counters
- Opening portlights aft and outboard
- Overhead hatches
- Hanging lockers
- Storage lockers
- Drawers
- Bookshelves

Nordhavn 47 SEABIRD

- Teak and spruce sole in stateroom
- Head with granite counters and recessed sink with faucet
- Tecma Silence Plus freshwater head
- Stand up shower with built in seat and bi-fold door
- Slate tiles on head floor

Engine Room: Through the robust door and down a few stairs, you will be impressed with the headroom in the engine room. The Lugger main engine propulsion is keel cooled with a dry stack exhaust. The engine is accessible on all four sides for service and inspection, easiest to move about forward and along the sides. Forward to port is the fuel valving selection locker with return and transfer manifolds and a large gravity fed aluminum supply tank for the main and generator. To port the main engine and transfer Racors are cleverly protected with easy viewing. Outboard up forward behind hinged opening lockers grants access to the active fin stabilizers. The main fiberglass fuel tanks are outboard and have built-in sight glasses. The aft section of the engine room has the Lugger wing engine to port and Northern Lights generator to starboard. The room is well lit and easy to move around in. You can also enter the engine room aft from the saloon floor or through the door connected to the lazarette.

- Lugger L1066T diesel engine 173 HP
- Dry stack exhaust
- Main engine keel cooling
- Coolant overflow reservoir collection bottle
- ZF 4 to 1 transmission
- Racor Duplex 900 fuel filters main engine
- Main propeller shaft was removed and replaced (along with cutlass bearing) with upgraded electrolysis resistant A22 alloy in 2017
- Lugger 40HP wing engine with V-drive transmission, own shaft and Gori folding three blade propeller
- Wing engine isolated 10-gallon day tank
- Racor 500 Fuel filter for Wing
- Northern Lights 16kW generator with sound shield (note: installed 6" forward to insure accessibility to seacock strainer)
- Racor 500 Fuel filter for generator
- Racor 900 Fuel filter for transfer filter with Walbro pump on timer
- Separate AGM engine starting batteries
- Engine room exhaust and vent blowers
- Marine air reverse cycle air conditioning intake, strainer and pump
- Bronze sea water filters on aft port and starboard engine room seacocks
- ABT Trac hydraulic stabilizers with 7.5 square ft. fins, keel cooled
- Engine room fire suppression system with auto engine, generator and blower shut down and pull cables from saloon
- Reverso oil change system plumbed to main, main transmission, wing and generator
- Fiberglass primary fuel tanks with recessed sight gauges
- Fuel manifold with selection valves for return and transfer
- Dedicated 80-gallon aluminum supply tank – feeds main and generator. Tank has sight glasses and sump with drain valve and water in fuel alarm.
- Built-in stainless-steel chest

Nordhavn 47 SEABIRD

- Par and Rule (high water) electric bilge pumps and an Edson manual bilge pump

Lazarette: Though the large fiberglass cockpit hatch you can climb down a short ladder to enter the lazarette to inspect the steering, crane machinery, water maker, central vacuum, batteries, select switches, fuses, battery charger and inverter. Both the engine room and the lazarette are protected with built in fire suppression. This area is spacious enough to accommodate a lot of extra supplies and is a convenient storage area. There is a door that connects the lazarette with the engine room.

- Side power 24-volt stern thruster
- Fire suppression system in Lazarette, manual pull cable in saloon
- Stainless stairs from cockpit with teak treads
- NuTone central vacuum
- Trace inverter/charger with inverter bypass
- Mastervolt 100-amp 50/60 Hz charger (added)
- 40 lb. Danforth anchor with chain and rode
- Secondary 35lb. plow anchor with detachable shank
- House battery banks
- Hydraulic RAM steering access
- (2) Accusteer hydraulic pumps for steering
- Steelhead crane power pack with hydraulic and electrical connections
- Battery banks parallel switch panel
- Emergency tiller

Foredeck: The foredeck, in front of the Portuguese bridge, is all business with a large stainless steel pulpit, dual bow rollers for anchors and chain, a Maxwell electric windlass and Freeman hatch to reach the divided chain locker below. The anchor well is dammed and guttered to keep muddy water from spilling onto the foredeck and, like the chain locker, drains overboard. There are two deck molded fiberglass storage lockers and dorade vents providing fresh air ventilation to each stateroom. Primary shore power connections are concealed behind a hinged door aft to port.

- Side power 24-volt bow thruster
- Freeman hatch to access divided chain locker
- Maxwell VWC 3500 windlass with heavy duty chain stopper and custom cover
- Large double bow rollers
- 110 lb. CQR plow anchor with 400' 7/16 chain
- Pilothouse windshields washers/wipers with variable speed control of each forward window
- Bow tow eye ring 12" above water line -allows snubber/rode lower attachment height
- Built-in fiberglass foredeck storage lockers for shore power accessories, windlass bar, hoses, etc.
- 500' of 1" Dacron braid line in chain locker shelf for emergency mooring e.g. hurricane rigging, etc.

Nordhavn 47 SEABIRD

Portuguese Bridge: The Portuguese bridge leads aft on the port side up to the boat deck. There are portlights built in to the guest stateroom and storage lockers incorporated forward for easy access of gear stowage.

- Storage lockers
- Stainless steel handrail across top
- Boarding gate to foredeck
- Recessed hatch aft for owner's stateroom

Boat Deck: The boat deck has a Steelhead crane centered with two tenders, a Nautica RIB tender to port and a smaller Avon RIB tender to starboard. With the tenders launched it is a large outdoor deck space.

- Fiberglass dry stack with engine room stack blower
- Nautica DL 11 RIB with Honda 40 HP outboard with supporting chocks and tie downs
- Avon Rover 3.10 RIB (beaching wheels) with Honda 8 HP outboard and rotating wheels for beach landing on SST removable chocks and tie downs
- Fixed chocks for large dinghy
- Steelhead 1,500 lb. dinghy crane with extendible boom for 12' reach mounted aft center. Allows launching of either dinghy port, starboard or aft.
- Crab pot (collapsible) and associated lead filled lines and floats
- Folding teak grate passarelle with safety stanchions essential for med mooring to quay

Flybridge: Up a short set of teak steps brings you to the flybridge with two Prime Fabrication helm chairs and a wide bench for seating. The starboard helm seat is set up for command with all of the primary controls and nav/com electronics located for ease of operation. The overhead is covered with a stainless-steel framed Bimini top ideal in good weather for relaxing in shade and out of the rain. There is storage under the bench and forward behind the lockers.

- Stainless steel Bimini top with gray vinyl cover
- (2) Prime helm chairs
- Built-in bench seating with storage below, cushions and covers
- Storage lockers forward
- Lugger main engine display
- SPT II Mathers electronic engine control
- Side power Bow and Stern Thruster controls
- Simrad AP 50 autopilot
- Simrad 50 micro rudder navigation remote control with rudder position readout
- M604 Command Mic3 (removable)
- AM FM CD player with 4 speakers
- Furuno NavNet Multifunction Display
- Trac Stabilizer Control
- Instrument cluster has covers
- Avon 8-person life raft mounted in hard canister on flybridge by the bench seat
- Port and starboard flag halyards
- Deck floodlights

Nordhavn 47 SEABIRD

- Sea anchor system (heavy duty capability if ever needed) stored under forward cabinet
- Drogue stored under forward cabinet

PLUMBING SYSTEMS:

- 400-gallon freshwater in two separate and selectable fiberglass tanks
- Freshwater wash down spigots in bow, stern and engine room
- Village Marine Watermaker, Squirt 600, 220V with auto back flush
- Grohe faucets
- House water pump
- Fresh water wash down pump
- 110-gallon gray water tank
- Galley sink has two-way valve for overboard discharge to avoid sink garbage from contaminating grey water tank
- 120-gallon black water tank
- (2) Tecma Silence Plus fresh water heads
- Sealand tank watch monitoring system
- 1,400 gallons of fuel in two fiberglass tanks with sight gauges
- Sophisticated gravity feed 80-gallon fuel supply tank with calibration fuel burn gauge and water contamination audible sensor
- Dual Racor fuel filters Transfer/polishing pump with timer on fuel system
- PAR electric bilge pump
- Rule 3700 high water electric pump w/audible alarm
- Edson manual bilge pump operable from main salon model 638AL

ELECTRICAL SYSTEMS:

- AGM 24-volt house batteries, with 3 separate units consisting of (6) 8D batteries, 255 amp each
- Separate main starting batteries
- Separate wing and generator starting batteries
- 16 kW Northern Lights generator with sound enclosure
- 50 and 30-amp shore power inlets plus 50-amp aft cockpit inlet
- Two (2) 50-amp shore cords and (2) 30-amp shore cords
- 4,000-watt Xantrex Trace inverter/charger with PHSWRC remote panel for inverter charger
- Mastervolt 100-amp charger 50/60 HZ for European dock power and extra battery charging
- Inverter bypass switch for use if inverter should fail
- Battery bank monitoring
- Exterior connection inlet for TV/ cable/phone
- PAE custom electrical distribution panel
- Fully tinned wiring
- Large case 270-amp engine belt driven alternator
- Olsun isolation transformer
- Olsun balancing transformer
- SSB ground with Dynaplate on hull to wheelhouse using copper coil
- Lightning ground protection system
- Color coded wiring
- 12 V outlets in pilothouse and flybridge

Nordhavn 47 SEABIRD

MISCELLANEOUS

- New bottom paint (August 2020)
- Complete exterior cleaning and wax (August 2020)
- Extra stainless-steel exterior rails on port and starboard cap rails and above exterior stairs, starboard side and on Portuguese bridge cap rail
- Flopper stopper pole mounted port side; all rigging and plates
- Kahlenberg K-380 compressor horn
- Satellite TV stainless platform installed with internal wiring to pilothouse, owner stateroom and saloon TV
- Additional 110 V outlets throughout
- Internal wiring from flybridge to pilothouse instrument panel for infrared sensors if desired
- Lexan storm plates for salon windows for heavy weather ocean passages with installed and hardware; for all 6 salon windows
- Extensive spare parts including Nordhavn suggested kits for boat, main and wing engines with large number of fuel filters for all Racor filters, plus spare hydraulic steering RAM, Tecma head macerator, light bulbs for navigation and interior lights and many more spare parts for extensive offshore cruising
- Complete set of operations manuals
- Life jackets, large fenders, extensive lines, extensive flare/emergency kit, EPIRB, life ring

SEABIRD has served well as an ocean crossing, long range cruising platform. PAE, the builder, evolved the Nordhavn 47 into the Nordhavn 52 model (for hundreds of thousands of dollars more in cost) and made standard the flybridge, fiberglass stack and crane – just like **SEABIRD**. One of the last of the 47's she is a testament to her build quality and Nordhavn pedigree.

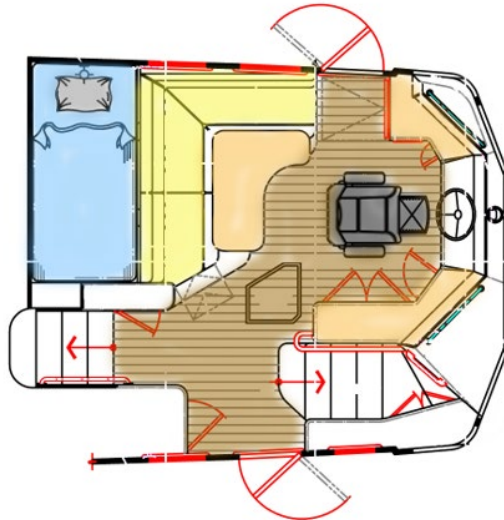
Highlighted Equipment aboard SEABIRD

- Lugger 1066T main engine 173 HP – dry stack, keel cooled with 3.9:1 transmission
- Fiberglass dry stack enclosure with antenna mounts
- Spurs line cutter on main engine shaft
- Lugger L844D 40 HP wing engine
- 16 kW Northern Lights generator with sound shield
- Reverso oil change system
- Lightning ground
- Cruisair air conditioning in living spaces
- Xantrex inverter/charger with bypass
- Master Volt battery charger
- Lifeline AGM batteries
- Shore power connections forward and aft
- Sea Fire fire-suppression in engine room and lazarette
- ABT TRAC 220 active fin stabilizers – keel cooled
- Flopper stopper set up for port size – pole, lines, hinged plate
- Maxwell electric windlass, 400' of chain with chain stopper
- Two large additional anchors
- Bow “tow eye” bail for reducing scope

Nordhavn 47 SEABIRD

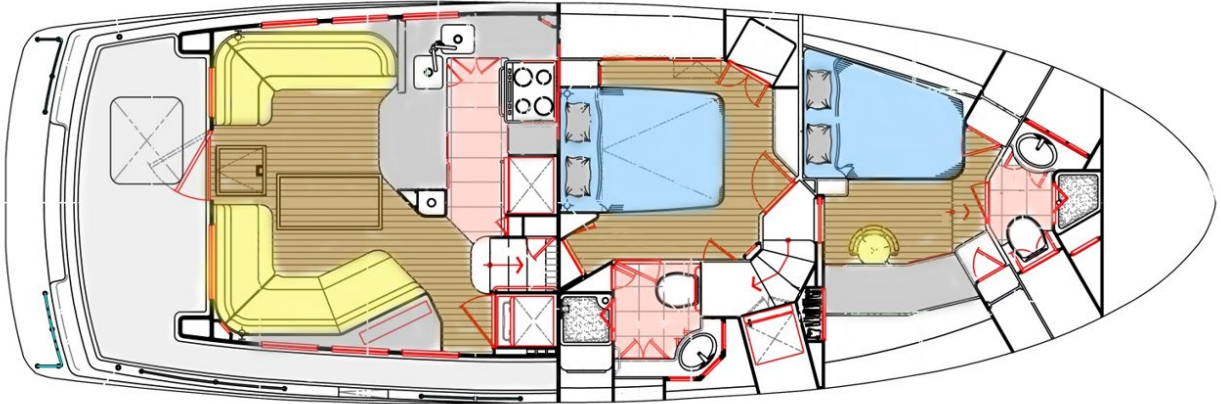
- 24V Sidepower bow and stern thruster (10.7 HP each)
- Steelhead SM1500R crane
- Nautica DL 11 RIB with Honda 40 HP outboard
- Avon 3.10 RIB with Honda 8 HP outboard
- Canvas covers for windlass, flybridge chairs, flybridge bench and flybridge instrument console.
- Village Marine 600 GPD water maker
- Scandvik cockpit hot cold fresh water shower
- (2) Tecma fresh water toilets
- Galley sink Insinkerator disposal
- Y-valve for galley sink overboard discharge
- GE appliances with stainless steel finish in the galley
- Sub-Zero refrigerator with freezer drawers in galley
- Sub-Zero freezer in forward stairwell
- (3) large propane tanks in cockpit locker
- Flat screen television on lift in saloon
- Asko clothes washer and Asko clothes dryer
- Teak dinette table in saloon
- NuTone central vacuum
- Stidd helm chair in pilothouse

LAYOUT: Upper Deck Pilothouse



Nordhavn 47 SEABIRD

LAYOUT: Main Deck – Saloon, Galley, Staterooms



For additional information please visit the SEABIRD website, www.Nordhavn47ForSale.com

Please watch our YouTube video: Link: <https://youtu.be/e16aQkG8lvq>



The detail photos of **SEABIRD** were taken in September of 2020 (many more images are available by request- [contact the listing broker*](#)).

Nordhavn 47 SEABIRD



Exclusions: Potential purchasers should assume that items on the vessel at the time of viewing, but not specifically listed on this sheet, are not included with the sale of the yacht. These specifications are believed to be true and correct but cannot be guaranteed. Items excluded include, but are not limited to Paintings, tools, SCUBA gear, food, handheld nav gear and binoculars. Owner's personal effects and clothing will be removed prior to closing.

Disclaimer: Jeff Merrill Yacht Sales, Inc. presents the details of this vessel in good faith but cannot guarantee or warrant the accuracy of this information nor guarantee or warrant the condition of the vessel. Buyers should instruct their agents and their surveyors to investigate all details the buyers desire validated. This vessel is offered subject to prior sale, price change, or withdrawal without notice.

Brokerage: JMYS is a US based (licensed and bonded yacht brokerage in California, Florida and Washington) with an international emphasis specializing in ocean capable trawlers and recreational tugs. Our brokers are experienced boaters, most are trawler owner/operators with thousands of hours and miles at sea. The team at JMYS has extensive trawler and motor yacht product knowledge and our skills are available for coaching after the sale has concluded.

Co-Brokerage: Fellow yacht broker association members: This listing is available for co-brokerage and JMYS is a 50/50 house. Courtesy showings are available by appointment. Florida listings subject to appropriate broker licensing required by law.

Nordhavn 47 SEABIRD

***Listing broker. Jeff Merrill, CPYB** (Certified Professional Yacht Broker) has extensive product knowledge of the trawler market plus intimate knowledge of the Nordhavn 47. He helped clients build several new 47's during his 14 years with PAE and continues to be active in the Nordhavn brokerage market. Jeff is a familiar face to YouTube viewers, is a regular presenter at TrawlerFest and is one of the instructors for Boaters University online courses.

This listing specification has been approved by the sellers for accuracy. The photos, images and descriptive content are copyrighted by JMYS and may not be copied or used without specific written permission. All inspections are by appointment only. Please contact listing broker, **Jeff Merrill, CPYB** by phone, text or email for additional information or to schedule your personal showing. Jeff is always available via Mobile (949) 355-4950 (call or text). You can send a detailed Email to: Jeff@JMYS.com.



Licensed and Bonded in California, Florida and Washington.

Skype: jeff.merrill | You Tube: Jeff Merrill Yachts | Twitter: @merrillyachts | LinkedIn: jeff.merrill
Facebook: Jeff Merrill Yacht Sales | Instagram: jeffmerrilljmys | Yacht Brokers Association of America |
International Yacht Brokers Association (Florida) | Northwest Yacht Brokers Association |
California Yacht Brokers Association – President 2015 and 2016

