

Nordhavn 43 Celt



JMYS

Jeff Merrill Yacht Sales, Inc. | www.JMYS.com
3010 Old Ranch Parkway, Suite 440 | Seal Beach, CA 90740

Florida address: Jeff Merrill Yacht Sales, Inc., 3321 S.E. 14th Avenue | Ft. Lauderdale, FL 33316



Celt

Price: \$625,000.00

Location: Alva, FL

Nordhavn 43 Celt

INTRODUCTION:

Celt is a proven Nordhavn 43 that has just completed some major restoration projects to confirm machinery and equipment is operational and in good working order. She and has improved her reliability while logging many hours over the past three years.

As a model, the Nordhavn 43 is a popular a two stateroom, two head, owner operator trawler designed for long distance cruising. Enjoying the benefits of Nordhavns keel cooled, dry stack exhaust for the Lugger main engine, **Celt**, and her sister ships, were created to go and go – these trawlers are happiest when they are out running from island to island, port to port.

Running with her trusty ABT TRAC active stabilizers she has a smooth, even ride. Her Yanmar wing engine gives peace of mind if you are worried about back up propulsion. Every system was installed for performance and ease of service.

The 43 has a reasonable cockpit deck area aft with three boarding doors. You can walk forward along the starboard side deck to reach the Portuguese bridge level and continue up to the foredeck and anchor, or curve around aft to port and ascends to the boat deck. The dinghy is mounted here and launched by the mast and boom arrangement.

Inside she is a teak treasure – matching grain wood on bulkheads and built-in furniture, including teak planked soles. You enter the saloon with seating on both sides and a dining table to starboard. Forward to port is the galley which has been the source of numerous meals during her cruises.

Up to the pilothouse you can manage operations from the Stidd helm chair and have great visibility of the outside world through multiple windows.

The lower level has the guest stateroom forward with a double berth to port and an office desk to starboard fronted by a head with shower, sink and toilet.

The owner cabin has an island berth bed arrangement with an ensuite sink, shower and toilet.

The engine room below the saloon and the lazarette below the cockpit provide protected areas for the working machinery and the layout of equipment gave a lot of thought to access and servicing.

Nordhavn 43 Celt

SPECIFICATIONS:	
YACHT NAME:	<i>CELT</i>
BRAND AND MODEL:	Nordhavn 43
TYPE:	Long range raised pilothouse trawler yacht
LOCATION:	Alva, FL
MODEL YEAR:	2006
HULL NUMBER:	21
HULL COLOR:	Gray gelcoat - blue stripe
DECK:	White deck with gray nonskid (gelcoat)
REGISTRY:	United States Coast Guard documented
DESIGNER:	Jeff Leishman
BUILDER:	South Coast
HULL MATERIAL:	Solid fiberglass
DISPLACEMENT:	54,540 LBS. 24,790 KG
BALLAST:	4,000 LBS. 1,820 KG
SPEED:	Cruise 7.8 knots. Top 7.8 knots.
RANGE:	2,800 miles at cruise speed - 7.8 knots (S/L 1.12)
LOA:	43'9" 13.11 M
LWL:	38'4" 11.68 M
BEAM:	14' 10" 4.52 M
DRAFT:	4'11" 1.5 M
AIR DRAFT:	Approximately 32' 9.21 M with mast up.
A/B RATIO	1.875:1
D/L RATIO	425
CP - PRISMATIC COEFFICIENT	0.59
ENGINE	Lugger 6068 105 HP (Hours~ 5,650 June, 2022) Morse dual lever controls ZF W220 3.96:1 marine gear
PROPELLER / SHAFT	2" Aquamet 17 shaft 4 blade 32 x 28 bronze propeller
MAIN EXHAUST:	Keel cooled, dry exhaust. Fernstrum grid cooler.
WING ENGINE:	Yanmar model 3YN30V 24 HP Morse dual lever controls Kanzaki KM3 V-drive transmission (Hours ~70 June 2022) 1" 304 SS shaft Martec 2-blade folding propeller
THRUSTER:	Side Power 8 HP electric bow thruster

Nordhavn 43 Celt

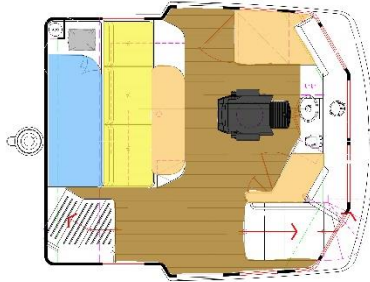
STABILIZATION:	ABT TRAC hydraulic active fin stabilizers Flopper stopper system
ELECTRICAL:	60 Hertz – US style – 30-amp
SHORE POWER:	30-amp for house and 30-amp air con
GENERATOR:	Northern Lights 12kW generator (~7,950 hours June 2022)
INVERTER/CHARGER:	Xantrex 2512 inverter/charger NOCO smart battery chargers
BATTERIES:	Lifeline AGM (8) House and Start Batteries (5) 8-D and (1) 4-D batteries in lazarette, (2) 8-D batteries below guest cabin
INTERIOR LIGHTING:	LED lighting
CLIMATE CONTROL:	Cruisair reverse cycle HVAC: (3) compressors
WATERMAKER:	Sea Recovery Aqua Whisper 170 GPD water maker Rain Man water maker
MACHINERY EQUIPMENT:	Reverso oil changer Racor Duplex for main Walbro fuel transfer pump with Racor filter Hookah underwater air compressor
WINDLASS:	Maxwell VWC 3500 vertical electric windlass Chaincounter in pilothouse
GROUND TACKLE:	110 LB. Claw anchor with 400' 3/8" HT chain 66 LB. Claw secondary
MAST AND BOOM	Forespar mast and boom for dinghy with electric winches
TENDER AND OUTBOARD:	Zodiac Cadet 10 inflatable dinghy with seat and steering console 20 HP Tohatsu outboard
NAV/COM BRANDS:	Furuno Icom Simrad NavNet
ENTERTAINMENT:	Fusion stereo in pilothouse with speakers Visio flat screen television in saloon Owner stateroom flat screen smart television
STATEROOMS:	Two: Owner amidships, Guest forward
BEDDING:	(Owner) amidship with custom mattress Forward guest stateroom Pilothouse watch berth with pull out
HEADS:	Two: Raritan Atlantes electric freshwater toilet owner Groco K raw water electric guest
HOT WATER:	Seward S1100 11-gallon water heater tank
SHOWERS:	Three: Stand up in owner head with door Stall in guest head with curtain Cockpit shower

Nordhavn 43 Celt

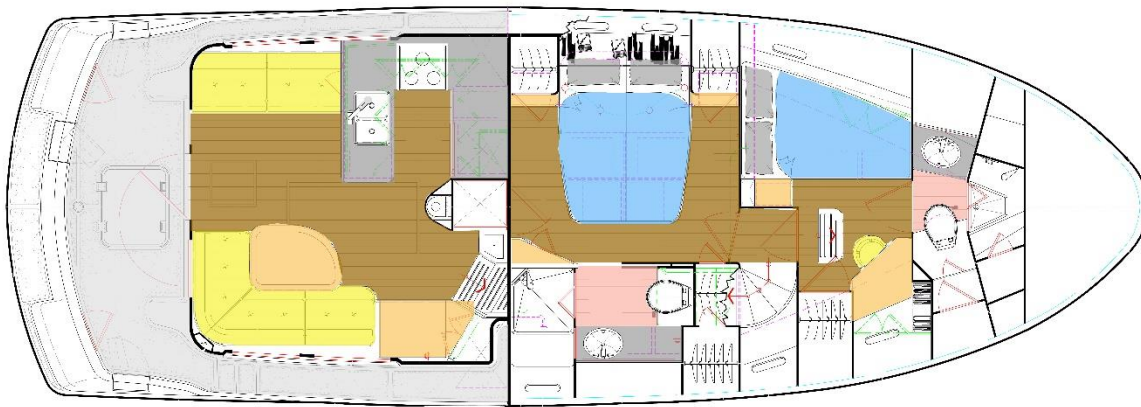
LAUNDRY:	Splendide model 7100XC combination clothes washer/dryer, vented
GALLEY:	Force 10 three-burner propane stove and oven with broiler GE Profile microwave oven GE Monogram trash compactor Isotherm refrigerator drawers SubZero refrigerator/freezer (with ice maker) in stairs to pilothouse
INTERIOR WOOD:	Light Teak
INTERIOR COUNTERS:	Corian counters
INTERIOR UPHOLSTERY:	Ultraleather
INTERIOR FLOORING:	4" wide teak strips hardwood throughout
BILGE PUMPS:	Three: (1) Flojet electric (1) Rule 3700 electric high water bilge pump (1) Edson manual bilge pump
TANKAGE: (approx.)	
FUEL:	1,200 gallons 4,542 liters (Two fiberglass primary tanks, one aluminum supply tank, one aluminum wing engine supply tank)
HOLDING BLACK:	50 gallons 189 liters (One fiberglass tank)
HOLDING GRAY:	50 gallons 189 liters (One fiberglass tank)
FRESH WATER:	180 gallons 681 liters (Three tanks - two molded, one fiberglass)
SAFETY:	Sea-Fire engine room fire suppression system USCG safety package EPIRB Viking 4-person offshore life raft Water in fuel alarm High water bilge pump and alarm ACR 4800 Search light
PHOTO DATE:	Most photos taken May 2022
Note: All information is believed accurate but should be verified.	

Nordhavn 43 Celt

Layout: Raised Pilothouse



Layout: Main and Lower Deck – Saloon, Galley, Staterooms and Heads



ACCOMMODATIONS and LAYOUT:

The Nordhavn 43 is a passage maker that was created for a cruising couple to maintain and operate. She benefits from hundreds of Nordhavns that preceded this model. The design team truly addressed the priorities a capable pair would require to be safe and comfortable while traveling long distances. Celt is no stranger to long range adventures she was built to do just that - and her interior is beautifully crafted so that you can enjoy being aboard while both underway and at rest.

SALOON: You enter the saloon through a Dutch door to greet the entry level which consists of the saloon and galley. The saloon has settees on both sides and large windows allow for a beautiful view. For dining and relaxing, this aft section of the boat is very appealing. There is a top load freezer forward to starboard, conveniently installed directly across from the galley.

- Dutch door entry from the cockpit
- Ultraleather settees with storage underneath

Nordhavn 43 Celt

- Manual activation for engine room fire suppression
- Teak planked wood floors
- Opening and fixed windows outboard on both sides
- Window blinds
- Flat screen television forward
- Stereo system
- Forward locker for top load freezer
- Teak dining table

GALLEY: The galley is ideal for storing cooking conveniences and for preparing meals. There is refrigeration by Isotherm and a Force 10 propane stove and oven. Lockers, drawers and a spacious Corian counter make this a pleasing place to cook.

- Force 10 (3) burner stove top with oven
- Xintex propane control panel
- GE Profile Spacemaker II microwave oven
- (2) Isotherm stainless steel refrigerator drawers
- SubZero combination refrigerator freezer with stainless steel face in stack by stairs
- GE Monogram trash compactor with teak face
- Double basin stainless steel sink with Grohe faucet
- Teak plank sole
- Opening portlight
- Forward storage lockers
- Overhead storage locker with access doors
- Multiple storage drawers
- VHF radio hand mic

PILOTHOUSE: The primary operations center for navigation and communication, this wheelhouse has a practical layout of the many controls and displays that you use for cruising. The Stidd helm chair assists comfort for a long watch and most key components are easily within reach. The electrical breakers are labeled for convenience. A bench seat aft has a teak table and there is a single watch berth behind. Two outside leading Dutch doors allow you to go outside. The forward stairwell takes you to the accommodations level with staterooms and heads.

- Stidd helm chair
- Luggar main engine display panel and controls
- Yanmar main engine display panel and controls
- SidePower bow thruster toggle
- ABT TRAC stabilizer panel
- Xantrex inverter display panel
- Inverter bypass switch
- Northern Lights generator display panel
- Maxwell windlass control
- Digital chain counter

Nordhavn 43 Celt

- Air conditioning
- Epson printer
- Sea Recovery water maker remote panel
- Spendide 7100XC combination clothes washer and dryer (vented)
- Watch berth aft
- Ultraleather settee
- Teak table
- Panasonic laptop computer with chart software
- ICOM VHF M-504
- ICOM VHF (second)
- Simrad autopilot
- Simrad display
- Analog wind display
- NavNet v2 display with GPS
- Radar integrated in NavNet
- AIS integrated in NavNet
- Chart plotter integrated in NavNet
- Depth sounder integrated in NavNet
- SeaFire fire suppression
- High water in bilge alarm
- Water in fuel alarm
- Fusion stereo
- Wipers
- Horn
- Compass
- Clock
- Barometer
- Overhead red lights for night
- ACR search light
- EPIRB
- CCTV cameras in engine room and cockpit
- Fan
- Chart drawler
- Electrical breakers
- Stereo and speakers

FORWARD STAIRS: From the pilothouse, you drop down to the lower level which has both staterooms and heads as well as access to the engine room.

GUEST STATEROOM and HEAD: Located forward this stateroom has the popular double wide berth to port and working desk with chair to starboard. The head and shower is positioned forward. There is outside airflow from the on deck Dorade vent, plus opening overhead hatches and outboard opening port lights.

Nordhavn 43 Celt

- Double wide berth to port
- Desk and chair to starboard
- Rain Man water maker
- Opening portlights port and starboard
- Overhead opening hatches with screens
- Teak plank soles with hatch access to tanks
- Lockers and drawlers
- Groco K electric sea water toilet
- Y-valve for head
- Stand up stall shower with curtain
- Storage lockers
- Sink undermounted into Corian counter
- Mirrored medicine cabinet with storage

OWNER STATEROOM and HEAD: The amidships owner stateroom is a private area that is also very comfortable. The head and shower are connected en-suite to starboard. There are two hanging lockers and drawers. The forward bulkhead has a large mirror. The floors are teak. The head has a large shower stall with bi-fold door, granite counter with sink and medicine cabinet and the fresh water toilet.

- Island berth sleeps two
- Two portlights outboard
- Mirror on forward bulkhead
- Hanging lockers
- Night stands
- Assorted drawers
- Raritan Atlantes fresh water head
- Y-valve for head
- Stand up shower with bi-fold door
- Corian counters with undermount sink
- Holding tank level sensor
- Fresh water level sensor

ENGINE ROOM: This machinery space has a tall entrance door off the owner cabin. Primary propulsion is provided from the Luggar main engine which is keel cooled with a dry stack exhaust. The primary fuel tanks are fiberglass and have sight glasses. The Northern Lights generator to starboard has sound shields. The Yanmar wing engine to port provides independent propulsion. The fuel distribution is via a forward supply tank and uses manifolds and Racor fuel water separators.

- Luggar main engine – keel cooled, dry stack exhaust
- Yanmar wing engine with isolated aluminum fuel tank
- Northern Lights 12 kW generator
- Racor fuel filters
- Fuel manifolds for supply, return and transfer
- Fuel transfer pump

Nordhavn 43 Celt

- Tools (some will remain, some will be removed)
- ABT TRAC active fin stabilizers
- Through hulls and strainers
- Sea Fire – fire suppression
- Electric bilge pump
- High water bilge pump
- Reverso oil change pump
- Fire blanket

LAZARETTE: The lazarette contains the steering gear, water maker, hot water tank, emergency tiller, air conditioners, batteries, inverter and chargers. This is a large space that serves to store the extras most cruisers accumulate.

- Xantrex inverter/charger
- Seaward 11-gallon hot water tank
- Hynautic steering ram with valves
- House batteries
- Genius chargers
- Emergency tiller
- Sea Recovery Aqua Whisper watermaker
- Fuse panel

EXTERIOR SUMMARY

SWIM PLATFORM/COCKPIT: The cockpit - aft deck has nonskid flooring with a large fiberglass hatch to enter the lazarette. There are three hull boarding doors – both sides and aft. The swim deck aft is designed for arrival by dinghy. The boat deck above overhangs to provide shade. The saloon door is centered, and you can go forward outside along the walking side decks.

- Cockpit hot / cold freshwater shower
- Large hatch access to lazarette below
- Freeing ports
- Hawse pipes for mooring lines
- Extra handrails
- Varnished teak cap rail
- Storage lockers
- Edson manual bilge pump
- Propane locker (2) tanks. Vented overboard
- Step up to starboard side deck
- (3) Boarding access gates to cockpit

Nordhavn 43 Celt

SIDE DECK/PORTUGUESE BRIDGE: From the cockpit you can step up to the starboard side deck and walk past the saloon up to the Portuguese bridge. The shore power connections are centrally located outside of the pilothouse on the starboard side. The Portuguese bridge deck has an access door to the foredeck and wraps around the front of the pilothouse.

- Side deck with stainless rails along starboard side.
- Shore power connections
- Hinged gate to foredeck
- Ships bell

FOREDECK: The Maxwell windlass is atop a guttered anchor well with a Freeman hatch access to the chain locker below. There two deck hatches above the forward cabin and forward head. Two built in fiberglass storage boxes. Two dorade vents. The life raft is mounted to port.

- Maxwell VWC 3500 windlass
- 50 KG Bruce anchor
- 400' chain
- Freeman hatch for chain locker
- Chain locker with shelves
- Two built in fiberglass deck boxes
- Cleats and hawse pipes
- Dorade scoops for natural air ventilation into each cabin

PILOTHOUSE ROOF: Flat platform for mounting accessories and gear storage.

- Viking RescYou life hard packed and mounted on cradle
- Thule storage crates for folding bicycles
- (2) folding bicycles
- Furuno radar on tripod
- Forward tending mast struts

BOAT DECK: This is a large deck with tall stainless steel safety railings. The mast supporting the dry stack exhaust pipe runs up from the engine room through the muffler console (muffler replaced). The boom is rigged with cables and blocks for dinghy launching. The dinghy is mounted athwartships, aft. There are two fiberglass storage boxes for gear.

- Zodiac Cadet 10 inflatable dinghy with seat, steering console and chaps
- 20 HP Tohatsu outboard
- Forespar mast and boom
- Electric boom winches in console
- EPIRB
- Life Sling
- Small fiberglass storage box
- Large fiberglass storage box

Nordhavn 43 Celt

- Ice chest
- Muffler for main engine exhaust replaced

SAFETY EQUIPMENT:

- US Coast Guard safety equipment (flares, fire extinguishers, discharge and trash plaques, horn, life jackets, throw ring, etc.)
- Sea-fire engine room fire system
- EPIRB mounted in pilothouse
- Viking 4-person life raft

ADDITIONAL BROKER COMMENTS:

Celt is a US Coast Guard Documented vessel. **Celt** is loaded and ready to head right back out to sea. The current owners have done an exceptional job looking after her and getting her back to cruising shape. When they purchased **Celt**, she was languishing on the market and had been mostly forgotten by her owners. Any boat that sits too long is bound to require some attention and that she did. The new owners quickly organized a strategy to live with the cosmetics as-is and spend energy, time and money to rectify all of the operational machinery and equipment. Their performance priorities were exactly what **Celt** needed. They also took **Celt** out away from land and traveled offshore to let her regain her joy of ocean travel. Any boat you buy awaits and needs your own personalization's. There are some cosmetic projects aboard **Celt** that you may consider past due (overhead panels), but nothing should prevent you from filling up with fuel and food and casting off for adventure.

For additional information please visit **Celt's** website: www.Nordhavn43ForSale.com

Exclusions: Potential purchasers should assume that items on the vessel at the time of viewing, but not specifically listed on this sheet, are not included with the sale of the yacht. These specifications are believed to be true and correct but cannot be guaranteed. Items excluded include, but are not limited to Paintings, tools, handheld nav gear and binoculars. Owner's personal effects and clothing will be removed prior to closing.

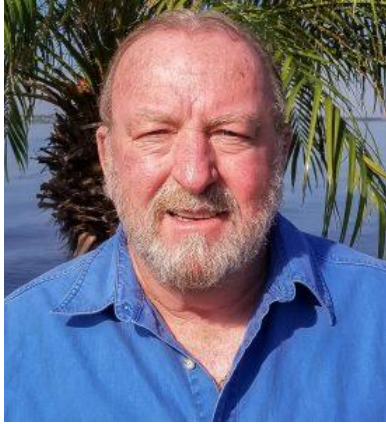
Disclaimer: Jeff Merrill Yacht Sales, Inc. presents the details of this vessel in good faith but cannot guarantee or warrant the accuracy of this information nor guarantee or warrant the condition of the vessel. Buyers should instruct their agents and their surveyors to investigate all details the buyers desire validated. This vessel is offered subject to prior sale, price change, or withdrawal without notice.

Brokerage: JMYS is a US based (licensed and bonded yacht brokerage in California, Florida and Washington) with an international emphasis specializing in ocean capable trawlers and recreational tugs. Our brokers are experienced boaters, most are trawler owner/operators with thousands of hours and miles at sea. We treat our clients with respect, we are responsive and not pushy. Our focus is to become your loyal advocate, always looking out for your best interests. The team at JMYS has extensive trawler and motor yacht product knowledge and our skills are available for coaching after the sale has concluded.

Co-Brokerage: Fellow yacht broker association members: **Celt** is available for Co-Brokerage.

Nordhavn 43 Celt

***Listing broker. John Hoffman**



About the listing broker: John Hoffman has years of experience working with the Nordhavn brand over the years, having retired from his position as Nordhavn Commissioning Manager in 2015. John's product knowledge, systems skills and friendly, helpful attitude have helped him excel as a JMYS yacht broker. John has his yacht salesman license in Florida and is eager to work with many current clients and also looking forward to helping new buyers and sellers. Please contact listing broker John Hoffman for additional information or to schedule a viewing appointment.

You can reach John by email: John@JMYS.com or call/text +1 772.215.3720.

This listing specification has been approved by the sellers for accuracy. The photos, images and descriptive content are copyrighted by JMYS and may not be copied or used without specific written permission. All inspections are by appointment only. Please contact listing broker, **Jeff Merrill, CPYB** by phone, text or email for additional information or to schedule your personal showing. Jeff is always available via Mobile (949) 355-4950 (call or text). You can send a detailed Email to: Jeff@JMYS.com.

***Listing broker. Jeff Merrill, CPYB.**

