

## **Nordhavn 43 *Celt***



# **JMYS**

Jeff Merrill Yacht Sales, Inc. | [www.JMYS.com](http://www.JMYS.com)  
4153 Country Club Drive | Long Beach, CA 90807

Florida address: Jeff Merrill Yacht Sales, Inc. | 3321 S.E. 14th Avenue | Ft. Lauderdale, FL 33316



## ***Celt***

**Price: \$599,000.00**

**Location: Alva, FL**

# Nordhavn 43 *Celt*

## INTRODUCTION:

***Celt*** is a proven Nordhavn 43 that has just completed some major restoration projects to confirm machinery and equipment is operational and in good working order. She and has improved her reliability while logging many hours over the past three years.

As a model, the Nordhavn 43 is a popular a two stateroom, two head, owner operator trawler designed for long distance cruising. Enjoying the benefits of Nordhavns keel cooled, dry stack exhaust for the Luggar main engine, ***Celt***, and her sister ships, were created to go and go – these trawlers are happiest when they are out running from island to island, port to port.

Running with her trusty ABT TRAC active stabilizers she has a smooth, even ride. Her Yanmar wing engine gives peace of mind if you are worried about back up propulsion. Every system was installed for performance and ease of service.

The 43 has a reasonable cockpit deck area aft with three boarding doors. You can walk forward along the starboard side deck to reach the Portuguese bridge level and continue up to the foredeck and anchor, or curve around aft to port and ascends to the boat deck. The dinghy is mounted here and launched by the mast and boom arrangement.

Inside she is a teak treasure – matching grain wood on bulkheads and built-in furniture, including teak planked soles. You enter the saloon with seating on both sides and a dining table to starboard. Forward to port is the galley which has been the source of numerous meals during her cruises.

Up to the pilothouse you can manage operations from the Stidd helm chair and have great visibility of the outside world through multiple windows.

The lower level has the guest stateroom forward with a double berth to port and an office desk to starboard fronted by a head with shower, sink and toilet.

The owner cabin has an island berth bed arrangement with an ensuite sink, shower and toilet.

The engine room below the saloon and the lazarette below the cockpit provide protected areas for the working machinery and the layout of equipment gave a lot of thought to access and servicing.

## Nordhavn 43 Celt

<b>SPECIFICATIONS:</b>	
<b>YACHT NAME:</b>	<b><i>CELT</i></b>
<b>BRAND AND MODEL:</b>	Nordhavn 43
<b>TYPE:</b>	Long range raised pilothouse trawler yacht
<b>LOCATION:</b>	Alva, FL
<b>MODEL YEAR:</b>	2006
<b>HULL NUMBER:</b>	21
<b>HULL COLOR:</b>	Gray gelcoat - blue stripe
<b>DECK:</b>	White deck with gray nonskid (gelcoat)
<b>REGISTRY:</b>	United States Coast Guard documented
<b>DESIGNER:</b>	Jeff Leishman
<b>BUILDER:</b>	South Coast
<b>HULL MATERIAL:</b>	Solid fiberglass
<b>DISPLACEMENT:</b>	54,540 LBS.   24,790 KG
<b>BALLAST:</b>	4,000 LBS.   1,820 KG
<b>SPEED:</b>	Cruise 7.8 knots. Top 7.8 knots.
<b>RANGE:</b>	2,800 miles at cruise speed - 7.8 knots (S/L 1.12)
<b>LOA:</b>	43'9"   13.11 M
<b>LWL:</b>	38'4"   11.68 M
<b>BEAM:</b>	14' 10"   4.52 M
<b>DRAFT:</b>	4'11"   1.5 M
<b>AIR DRAFT:</b>	Approximately 32'   9.21 M with mast up.
<b>A/B RATIO</b>	1.875:1
<b>D/L RATIO</b>	425
<b>CP - PRISMATIC COEFFICIENT</b>	0.59
<b>ENGINE</b>	Lugger 6068 105 HP (Hours~ 5,650 June, 2022)   Morse dual lever controls   ZF W220 3.96:1 marine gear
<b>PROPELLER / SHAFT</b>	2" Aquamet 17 shaft   4 blade 32 x 28 bronze propeller
<b>MAIN EXHAUST:</b>	Keel cooled, dry exhaust. Fernstrum grid cooler.
<b>WING ENGINE:</b>	Yanmar model 3YN30V 24 HP   Morse dual lever controls   Kanzaki KM3 V-drive transmission (Hours ~70 June 2022)   1" 304 SS shaft   Martec 2-blade folding propeller

## **Nordhavn 43 Celt**

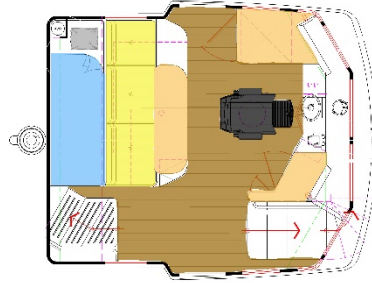
<b>THRUSTER:</b>	Side Power 8 HP electric bow thruster
<b>STABILIZATION:</b>	ABT TRAC hydraulic active fin stabilizers   Flopper stopper system
<b>ELECTRICAL:</b>	60 Hertz – US style – 30-amp
<b>SHORE POWER:</b>	30-amp for house and 30-amp air con
<b>GENERATOR:</b>	Northern Lights 12kW generator (~7,950 hours June 2022)
<b>INVERTER/CHARGER:</b>	Xantrex 2512 inverter/charger   NOCO smart battery chargers
<b>BATTERIES:</b>	Lifeline AGM (8) House and Start Batteries   (5) 8-D and (1) 4-D batteries in lazarette, (2) 8-D batteries below guest cabin
<b>INTERIOR LIGHTING:</b>	LED lighting
<b>CLIMATE CONTROL:</b>	Cruisair reverse cycle HVAC: (3) compressors
<b>WATERMAKER:</b>	Sea Recovery Aqua Whisper 170 GPD water maker   Rain Man water maker
<b>MACHINERY EQUIPMENT:</b>	Reverso oil changer   Racor Duplex for main   Walbro fuel transfer pump with Racor filter   Hookah underwater air compressor
<b>WINDLASS:</b>	Maxwell VWC 3500 vertical electric windlass   Chain counter in pilothouse
<b>GROUND TACKLE:</b>	110 LB. Claw anchor with 400' 3/8" HT chain   66 LB. Claw secondary
<b>MAST AND BOOM</b>	Forespar mast and boom for dinghy with electric winches
<b>TENDER AND OUTBOARD:</b>	Zodiac Cadet 10 inflatable dinghy with seat and steering console   20 HP Tohatsu outboard
<b>NAV/COM BRANDS:</b>	Furuno   Icom   Simrad   NavNet
<b>ENTERTAINMENT:</b>	Fusion stereo in pilothouse with speakers   Visio flat screen television in saloon   Owner stateroom flat screen smart television
<b>STATEROOMS:</b>	Two: Owner amidships, Guest forward
<b>BEDDING:</b>	(Owner) amidship with custom mattress   Forward guest stateroom   Pilothouse watch berth with pull out
<b>HEADS:</b>	Two: Raritan Atlantes electric freshwater toilet owner   Groco K raw water electric guest
<b>HOT WATER:</b>	Seward S1100 11-gallon water heater tank

## **Nordhavn 43 Celt**

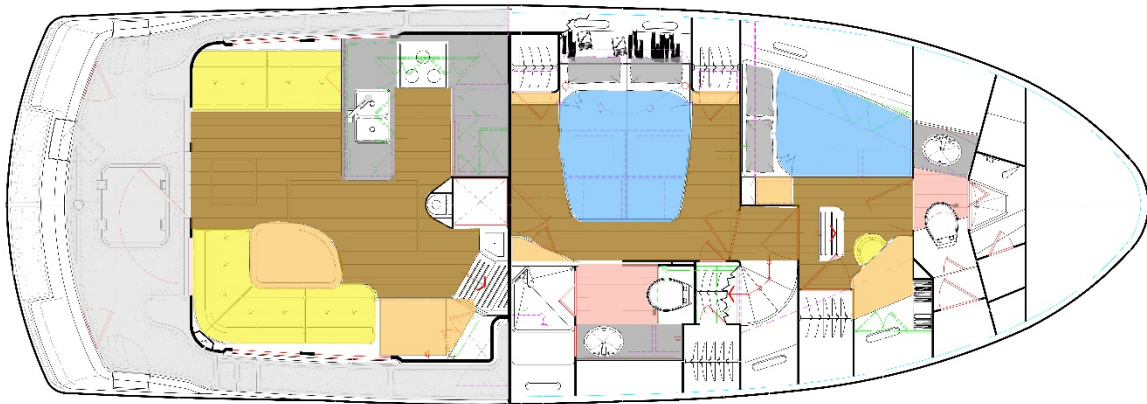
<b>SHOWERS:</b>	Three: Stand up in owner head with door   Stall in guest head with curtain   Cockpit shower
<b>LAUNDRY:</b>	Splendide model 7100XC combination clothes washer/dryer, vented
<b>GALLEY:</b>	Force 10 three-burner propane stove and oven with broiler   GE Profile microwave oven   GE Monogram trash compactor   Isotherm refrigerator drawers   SubZero refrigerator/freezer (with ice maker) in stairs to pilothouse
<b>INTERIOR WOOD:</b>	Light Teak
<b>INTERIOR COUNTERS:</b>	Corian counters
<b>INTERIOR UPHOLSTERY:</b>	Ultraleather
<b>INTERIOR FLOORING:</b>	4" wide teak strips hardwood throughout
<b>BILGE PUMPS:</b>	Three: (1) Flojet electric   (1) Rule 3700 electric high water bilge pump   (1) Edson manual bilge pump
<b>TANKAGE:</b> (approx.)	
<b>FUEL:</b>	1,200 gallons   4,542 liters (Two fiberglass primary tanks, one aluminum supply tank, one aluminum wing engine supply tank)
<b>HOLDING BLACK:</b>	50 gallons   189 liters (One fiberglass tank)
<b>HOLDING GRAY:</b>	50 gallons   189 liters (One fiberglass tank)
<b>FRESH WATER:</b>	180 gallons   681 liters (Three tanks - two molded, one fiberglass)
<b>SAFETY:</b>	Sea-Fire engine room fire suppression system   USCG safety package   EPIRB   Viking 4-person offshore life raft   Water in fuel alarm   High water bilge pump and alarm   ACR 4800 Search light
<b>PHOTO DATE:</b>	Most photos taken May 2022
<b>Note: All information is believed accurate but should be verified.</b>	

# Nordhavn 43 Celt

## Layout: Raised Pilothouse



## Layout: Main and Lower Deck – Saloon, Galley, Staterooms and Heads



## **ACCOMMODATIONS and LAYOUT:**

The Nordhavn 43 is a passage maker that was created for a cruising couple to maintain and operate. She benefits from hundreds of Nordhavns that preceded this model. The design team truly addressed the priorities a capable pair would require to be safe and comfortable while traveling long distances. Celt is no stranger to long range adventures she was built to do just that - and her interior is beautifully crafted so that you can enjoy being aboard while both underway and at rest.

**SALOON:** You enter the saloon through a Dutch door to greet the entry level which consists of the saloon and galley. The saloon has settees on both sides and large windows allow for a beautiful view.

## **Nordhavn 43 Celt**

For dining and relaxing, this aft section of the boat is very appealing. There is a top load freezer forward to starboard, conveniently installed directly across from the galley.

- Dutch door entry from the cockpit
- Ultraleather settees with storage underneath
- Manual activation for engine room fire suppression
- Teak planked wood floors
- Opening and fixed windows outboard on both sides
- Window blinds
- Flat screen television forward
- Stereo system
- Forward locker for top load freezer
- Teak dining table

**GALLEY:** The galley is ideal for storing cooking conveniences and for preparing meals. There is refrigeration by Isotherm and a Force 10 propane stove and oven. Lockers, drawers and a spacious Corian counter make this a pleasing place to cook.

- Force 10 (3) burner stove top with oven
- Xintex propane control panel
- GE Profile Spacemaker II microwave oven
- (2) Isotherm stainless steel refrigerator drawers
- SubZero combination refrigerator freezer with stainless steel face in stack by stairs
- GE Monogram trash compactor with teak face
- Double basin stainless steel sink with Grohe faucet
- Teak plank sole
- Opening portlight
- Forward storage lockers
- Overhead storage locker with access doors
- Multiple storage drawers
- VHF radio hand mic

**PILOTHOUSE:** The primary operations center for navigation and communication, this wheelhouse has a practical layout of the many controls and displays that you use for cruising. The Stidd helm chair assists comfort for a long watch and most key components are easily within reach. The electrical breakers are labeled for convenience. A bench seat aft has a teak table and there is a single watch berth behind. Two outside leading Dutch doors allow you to go outside. The forward stairwell takes you to the accommodations level with staterooms and heads.

- Stidd helm chair
- Luggar main engine display panel and controls
- Yanmar main engine display panel and controls
- SidePower bow thruster toggle
- ABT TRAC stabilizer panel

## Nordhavn 43 Celt

- Xantrex inverter display panel
- Inverter bypass switch
- Northern Lights generator display panel
- Maxwell windlass control
- Digital chain counter
- Air conditioning
- Epson printer
- Sea Recovery water maker remote panel
- Spendide 7100XC combination clothes washer and dryer (vented)
- Watch berth aft
- Ultraleather settee
- Teak table
- Panasonic laptop computer with chart software
- ICOM VHF M-504
- ICOM VHF (second)
- Simrad autopilot
- Simrad display
- Analog wind display
- NavNet v2 display with GPS
- Radar integrated in NavNet
- AIS integrated in NavNet
- Chart plotter integrated in NavNet
- Depth sounder integrated in NavNet
- SeaFire fire suppression
- High water in bilge alarm
- Water in fuel alarm
- Fusion stereo
- Wipers
- Horn
- Compass
- Clock
- Barometer
- Overhead red lights for night
- ACR search light
- EPIRB
- CCTV cameras in engine room and cockpit
- Fan
- Chart drawler
- Electrical breakers
- Stereo and speakers

**FORWARD STAIRS:** From the pilothouse, you drop down to the lower level which has both staterooms and heads as well as access to the engine room.



## **Nordhavn 43 Celt**

**GUEST STATEROOM and HEAD:** Located forward this stateroom has the popular double wide berth to port and working desk with chair to starboard. The head and shower is positioned forward. There is outside airflow from the on deck Dorade vent, plus opening overhead hatches and outboard opening port lights.

- Double wide berth to port
- Desk and chair to starboard
- Rain Man water maker
- Opening portlights port and starboard
- Overhead opening hatches with screens
- Teak plank soles with hatch access to tanks
- Lockers and drawlers
- Groco K electric sea water toilet
- Y-valve for head
- Stand up stall shower with curtain
- Storage lockers
- Sink undermounted into Corian counter
- Mirrored medicine cabinet with storage

**OWNER STATEROOM and HEAD:** The amidships owner stateroom is a private area that is also very comfortable. The head and shower are connected en-suite to starboard. There are two hanging lockers and drawers. The forward bulkhead has a large mirror. The floors are teak. The head has a large shower stall with bi-fold door, granite counter with sink and medicine cabinet and the fresh water toilet.

- Island berth sleeps two
- Two portlights outboard
- Mirror on forward bulkhead
- Hanging lockers
- Night stands
- Assorted drawers
- Raritan Atlantes fresh water head
- Y-valve for head
- Stand up shower with bi-fold door
- Corian counters with undermount sink
- Holding tank level sensor
- Fresh water level sensor

**ENGINE ROOM:** This machinery space has a tall entrance door off the owner cabin. Primary propulsion is provided from the Lugger main engine which is keel cooled with a dry stack exhaust. The primary fuel tanks are fiberglass and have sight glasses. The Northern Lights generator to starboard has sound shields. The Yanmar wing engine to port provides independent propulsion. The fuel distribution is via a forward supply tank and uses manifolds and Racor fuel water separators.

- Lugger main engine – keel cooled, dry stack exhaust

## **Nordhavn 43 Celt**

- Yanmar wing engine with isolated aluminum fuel tank
- Northern Lights 12 kW generator
- Racor fuel filters
- Fuel manifolds for supply, return and transfer
- Fuel transfer pump
- Tools (some will remain, some will be removed)
- ABT TRAC active fin stabilizers
- Through hulls and strainers
- Sea Fire – fire suppression
- Electric bilge pump
- High water bilge pump
- Reverso oil change pump
- Fire blanket

**LAZARETTE:** The lazarette contains the steering gear, water maker, hot water tank, emergency tiller, air conditioners, batteries, inverter and chargers. This is a large space that serves to store the extras most cruisers accumulate.

- Xantrex inverter/charger
- Seaward 11-gallon hot water tank
- Hynautic steering ram with valves
- House batteries
- Genius chargers
- Emergency tiller
- Sea Recovery Aqua Whisper watermaker
- Fuse panel

### **EXTERIOR SUMMARY**

**SWIM PLATFORM/COCKPIT:** The cockpit - aft deck has nonskid flooring with a large fiberglass hatch to enter the lazarette. There are three hull boarding doors – both sides and aft. The swim deck aft is designed for arrival by dinghy. The boat deck above overhangs to provide shade. The saloon door is centered, and you can go forward outside along the walking side decks.

- Cockpit hot / cold freshwater shower
- Large hatch access to lazarette below
- Freeing ports
- Hawse pipes for mooring lines
- Extra handrails
- Varnished teak cap rail
- Storage lockers
- Edson manual bilge pump
- Propane locker (2) tanks. Vented overboard
- Step up to starboard side deck

# Nordhavn 43 Celt

- (3) Boarding access gates to cockpit

**SIDE DECK/PORTUGUESE BRIDGE:** From the cockpit you can step up to the starboard side deck and walk past the saloon up to the Portuguese bridge. The shore power connections are centrally located outside of the pilothouse on the starboard side. The Portuguese bridge deck has an access door to the foredeck and wraps around the front of the pilothouse.

- Side deck with stainless rails along starboard side.
- Shore power connections
- Hinged gate to foredeck
- Ships bell

**FOREDECK:** The Maxwell windlass is atop a guttered anchor well with a Freeman hatch access to the chain locker below. There two deck hatches above the forward cabin and forward head. Two built in fiberglass storage boxes. Two dorade vents. The life raft is mounted to port.

- Maxwell VWC 3500 windlass
- 50 KG Bruce anchor
- 400' chain
- Freeman hatch for chain locker
- Chain locker with shelves
- Two built in fiberglass deck boxes
- Cleats and hawse pipes
- Dorade scoops for natural air ventilation into each cabin

**PILOTHOUSE ROOF:** Flat platform for mounting accessories and gear storage.

- Viking RescYou life hard packed and mounted on cradle
- Thule storage crates (folding bicycle size – no bikes included)
- Furuno radar on tripod
- Forward tending mast struts

**BOAT DECK:** This is a large deck with tall stainless steel safety railings. The mast supporting the dry stack exhaust pipe runs up from the engine room through the muffler console (muffler replaced). The boom is rigged with cables and blocks for dinghy launching. The dinghy is mounted athwartships, aft. There are two fiberglass storage boxes for gear.

- Zodiac Cadet 10 inflatable dinghy with seat, steering console and chaps
- 20 HP Tohatsu outboard
- Forespar mast and boom
- Electric boom winches in console
- EPIRB

## Nordhavn 43 Celt

- Life Sling
- Small fiberglass storage box
- Large fiberglass storage box
- Ice chest
- Muffler for main engine exhaust replaced

### **SAFETY EQUIPMENT:**

- US Coast Guard safety equipment (flares, fire extinguishers, discharge and trash plaques, horn, life jackets, throw ring, etc.)
- Sea-fire engine room fire system
- EPIRB mounted in pilothouse
- Viking 4-person life raft

### **ADDITIONAL BROKER COMMENTS:**

**Celt** is a US Coast Guard Documented vessel. **Celt** is loaded and ready to head right back out to sea. The current owners have done an exceptional job looking after her and getting her back to cruising shape. When they purchased **Celt**, she was languishing on the market and had been mostly forgotten by her owners. Any boat that sits too long is bound to require some attention and that she did. The new owners quickly organized a strategy to live with the cosmetics as-is and spend energy, time and money to rectify all of the operational machinery and equipment. Their performance priorities were exactly what **Celt** needed. They also took **Celt** out away from land and traveled offshore to let her regain her joy of ocean travel. Any boat you buy awaits and needs your own personalization's. There are some cosmetic projects aboard **Celt** that you may consider past due (overhead panels), but nothing should prevent you from filling up with fuel and food and casting off for adventure.

For additional information please visit **Celt's** website: [www.Nordhavn43ForSale.com](http://www.Nordhavn43ForSale.com)

### **43-21 Celt - Projects Completed 2019 – 2020 – 2021 - 2022**

*Note: Approximately \$200,000.00 spent to improve Celt during this time frame.* Purchase in March of 2019, **Celt** returned to active cruising. Some of this was overdue routine maintenance that had been deferred, others were projects that resulted from lack of use being stationary for a couple of years prior to purchase. The focus was targeted to improve reliability of essential equipment. Prior to sudden need for immediate sale she was prepared for an Atlantic crossing.

#### Air conditioning

Replaced air conditioning unit in saloon (2020)

Note: Previous owner replaced original two units during ownership

Installed tee and cap on all air conditioning and water inlets for winterization

#### Bilge pumps

Rebuilt Jabsco electric bilge pump

Rebuilt EDSON 30/gal per minute manual pump

Installed third bilge pump (electric) with check valve. Pump fitted with auto float and switch control in pilothouse

#### Boat deck, tender, spars, pilothouse roof

10' Zodiac Cadet consoled inflatable tender (2020)

Tohatsu 20 HP outboard (2020)

## **Nordhavn 43 Celt**

Set up bracket cradle system to stow and added auto bilge pump, power outlet, and console access door  
Installed two storage containers with bracket system for quick removal on top of wheel house (2020)  
Installed new fiberglass storage boxes on wheelhouse roof (2020)  
One storage box has hookah system with 100' hose and regulator  
Installed two Thule storage containers on wheel house roof (2020)  
Storage container 1 = 8'2" West Marine dinghy (spare tender) packed with peripherals  
Storage container 2 = (2) 12' paddle boards with peripherals  
Installed new EPIRB and new strobe flares also new 25 mm flare launch set up  
Installed Viking four-man liferaft  
Installed 110 V outlet up in stack house on top deck  
Installed Flopper Stopper system on pilothouse roof (2020)  
Installed two white fiberglass storage boxes on boat deck (2020)  
Replaced ice chest cooler seat on top deck  
Installed two outdoor white and stainless seats (2020)  
Replaced boom winch cable with Dyneema  
Installed alternate holding points for boom halyards  
Replaced all running rigging on mast and boom system (2021)

### **Electrical**

Replaced Square D two pole 30-amp main breaker in owner head cabinet (2020)  
Replaced (5) Lifeline 8D house batteries (2019)  
Installed panel switch and outlet from non-inverter panel to lazarette outlet  
Installed three G26000 NOCO smart battery chargers for main house bank in Lazarette. (Auxiliary, boost, trickle and backup charging).  
Installed 110 V non-inverted outlet on the floor in forward cabin for Rain Man watermaker and forward battery charger  
Upgraded (6) outlets to include USB and USBC connections

### **Entertainment**

Installed Smart TV in owner stateroom (2020)  
Install complete Fusion stereo system (2021)  
Install LG TV in saloon (2020)

### **Engine – Lugger main**

Replaced two fan belts on Lugger main  
Replaced engine mounts on Lugger main engine  
Reconditioned main shaft  
Replaced main cutlass shaft bearing  
Performed shaft realignments  
Stern gland repacked with four rings of 38GTU graphite/Teflon packing (2020)  
Reconditioned main propeller  
Replaced copper carbon brush on main shaft grounding system (2020)

### **Engine room**

Installed comprehensive tool center in engine room (2020)  
Reverso oil changer breaker replaced  
Recovered main engine exhaust blanket  
Changed oil filters on main engine, generator and wing engine and ZF gear box  
Replaced all Racor fuel filters  
Replaced air filters on main, wing and generator

## Nordhavn 43 Celt

Performed complete fuel polishing with Stanadyne treatment  
Installed complete replacement Harco muffler in stack house including modifying vibration bracket system (2021)

### Galley

Installed Isotherm drawers installed to replace SubZero refrigerator  
Replaced microwave  
Rebuilt stove in galley – new igniters and thermal couplers  
Replaced air conditioning damper in galley  
Replaced galley faucet pull out head  
Installed separate fresh water 0.5 micron filter and faucet set on main galley sink  
Installed new Kohler strainers and drain pipes on galley sink  
Replaced blower motor on galley exhaust system

### Stack fridge/freezer::

Replaced defrost timer on fridge/freezer ice maker  
Replaced solenoid and cooler fan on fridge freezer combo unit  
Replaced evaporator fan on fridge freezer  
Replaced fan for vaporizer fridge freezer

### General

Haul out Owl Creek Marina (Alva, FL) new bottom paint and zincs (2022)  
Zincs replaced on hull, main propeller, wing propeller, TRAC fins, thruster, line cutter and keel cooler. (12) total  
Haulout at Lambs Marina (Jacksonville, FL) washed bottom and changed all Zincs Hull (2020)  
Installed (7) grab bars  
Installed (2) foot grip holders  
Installed two carbon monoxide alarms  
Filed all boat manuals in proper filing box system  
Replaced BBQ cover  
Installed oil soaker sock and matt in bilge  
Dixon straps over hose clamps on the rubber portion of the stuffing box shaft seal (2020)  
Set up Dyson storage and charge system in owner stateroom hanging locker (2020)  
Set up (4) removable Lexan storm windows for saloon (2020)  
Recovered all leather seats in saloon (2020)  
Labeled locations for haul out slings on top sides

### Generator

Replaced complete fuel injection pump on generator (2020)  
Installed 2nd remote S1B starting panel at generator (2020)  
Replaced injector pump on generator (2020)  
Replaced glow plugs on generator (2020)  
Replaced fan belt on generator (2020)  
Replaced backlit bulbs on generator control panel (2020)  
Repaired generator cover  
Installed noise damper

### Forward head

Installed Groco vacuum loop on forward head.  
Installed check valve on forward head inlet

# **Nordhavn 43 Celt**

## Lazarette

Installed (two) foot climbers - lazarette and port rear bulkhead

## Lighting

Repaired light in anchor chain locker

Replaced steaming light bulb on mast

Replaced reading lamp forward owner suite

Installed LED lighting on all lighting fixtures and complete vessel

Installed new chart reading lamp red and clear LED

Installed soft wall lamp fixture in salon with dimmer switch

Installed three new powerful LED light fixtures in lazarette (2020)

Installed LED light above generator (2020)

installed LED lights under wheel house control center

Installed LED lights and wire in space behind large breaker panel (2020)

installed new ACR 4800 candle power search light with manual controls and remote 2020

## Nav/Com Electronics

Replaced EC4pq camera controller

Installed Nest camera in saloon

Provided CF-31 (Panasonic Tough Book) windows computer with OpenCPN and GPS

Installed Iridium Go set up with external antenna (subscription)

Installed Wave Wi-Fi and cellular antennas with complete router and control system (2020)

installed Simrad plotter evo3 12" screen and Hailo20+ Radar integrated to AIS

Installed Furuno 420 weather fax system. (2021)

Installed ICOM 504 VHF and 500 AIS complete system stand-alone with individual antennas

Installed GPS 86 with Iridium inReach

Installed complete stand-alone Simrad AP44 backup autopilot with Bluetooth remote

## Pilothouse

Installed Stidd helm chair in (2020)

Calibrated ships compass

Installed Trak-4 sensor in wheelhouse console

Recovered leather settee (2020)

Windshield wipers repaired and blades replaced

Installed ACR 4200 search light on wheelhouse roof with remote and toggle controls (2020)

Repaired air horns (2020)

installed FM radio with Sirius (subscription).

Installed five-temp sensor and monitor in wheelhouse

Installed remote control panel for Sea Recovery water maker (2020)

Installed 120 V power outlet in stack house with breaker at main panel (2020)

installed Splendide combo clothes washer dryer in wheelhouse (condensing) (2020)

Replaced tide clock in wheelhouse

Installed two additional 12 V outlets on port side of wheelhouse console

Replaced fan

Installed small breaker panel port side for additions: bilge pump, autopilot and Simrad autopilot

## Plumbing

Cleared clogged gauge glasses on water tanks

## Nordhavn 43 Celt

Installed new fresh water site tubes with improved valves  
Water tanks sanitized with shock treatment  
Installed fresh water filter/purifier unit faucet at galley sink (2020)

### *Gray water::*

Replaced Gray water bilge pump and float controller.  
Replaced 12 V mechanical pump and manual pump for gray water tank (2020)  
Rebuilt original 12V pump and manual pump units for spares (2020)

### *Black water::*

Installed small buzzer unit on holding tank pump circuit August 2020

### Hookah

Installed full hookah dive set up on pilothouse roof with 100' hose and regulator

### Stabilizers

TRAC stabilizer system improvements  
Replaced seals (2018) previous owner  
Replaced leaking high pressure oil delivery hose from top of oil filter to TRAC stabilizer compressor  
Flushed out and replaced iso 46 hydraulic fluid

### *Port side::*

Serviced TRAC system on portside (alignment was off)  
Replaced rod seal on ram  
Replaced bushings and rod pin  
Replaced rod end bushing

### *Starboard side::*

Replaced complete ram (2021)  
Replaced complete locking yoke ram (2021)  
Replaced rod seal on ram  
Replaced bushings and rod pin

### Watermakers

Installed 2nd complete water maker Rain Man 37 gallon per hour complete with backwash and remote controls (2021)  
Installed / replaced major components on water maker Sea Recovery model 170 (2020) Including; new solenoid complete, pressure control unit pressure gauges, replaced all filters and RO membrane and replaced primary pump

### Windlass and ground tackle

Maxwell windlass - complete service with new seals and circlips (2021)  
installed complete Maxwell chain counting system for windlass  
Serviced, reversed, oiled and cleaned 360 feet of chain  
Lewmar Claw 110 lb. plow anchor  
Lewmar Claw 75lb plow spare

### Wing engine

Installed Morse controls for wing engine. 2021  
Installed robotic gear shift on Yanmar gear box

**Exclusions:** Potential purchasers should assume that items on the vessel at the time of viewing, but not specifically listed on this sheet, are not included with the sale of the yacht. These specifications are believed to be true and



## Nordhavn 43 Celt

correct but cannot be guaranteed. Items excluded include, but are not limited to Paintings, tools, handheld nav gear and binoculars. Owner's personal effects and clothing will be removed prior to closing.

**Disclaimer:** Jeff Merrill Yacht Sales, Inc. presents the details of this vessel in good faith but cannot guarantee or warrant the accuracy of this information nor guarantee or warrant the condition of the vessel. Buyers should instruct their agents and their surveyors to investigate all details the buyers desire validated. This vessel is offered subject to prior sale, price change, or withdrawal without notice.

**Brokerage:** JMYS is a US based (licensed and bonded yacht brokerage in California, Florida and Washington) with an international emphasis specializing in ocean capable trawlers and recreational tugs. Our brokers are experienced boaters, most are trawler owner/operators with thousands of hours and miles at sea. We treat our clients with respect, we are responsive and not pushy. Our focus is to become your loyal advocate, always looking out for your best interests. The team at JMYS has extensive trawler and motor yacht product knowledge and our skills are available for coaching after the sale has concluded.

**Co-Brokerage:** Fellow yacht broker association members: **Celt** is available for Co-Brokerage.

**\*Listing broker. John Hoffman**



**About the listing broker:** John Hoffman has years of experience working with the Nordhavn brand over the years, having retired from his position as Nordhavn Commissioning Manager in 2015. John's product knowledge, systems skills and friendly, helpful attitude have helped him excel as a JMYS yacht broker. John has his yacht salesman license in Florida and is eager to work with many current clients and also looking forward to helping new buyers and sellers. Please contact listing broker John Hoffman for additional information or to schedule a viewing appointment. You can reach John by email: [John@JMYS.com](mailto:John@JMYS.com) or call/text +1 772.215.3720.

This listing specification has been approved by the sellers for accuracy. The photos, images and descriptive content are copyrighted by JMYS and may not be copied or used without specific written permission. All inspections are by appointment only. Broker of record is Jeff Merrill. [Jeff@JMYS.com](mailto:Jeff@JMYS.com) or call/text +1 949.355.4950.

**\*Listing broker. Jeff Merrill, CPYB.**

