

# Nordhavn 47 Navigator



# JMYS

Jeff Merrill Yacht Sales, Inc. | [www.JMYS.com](http://www.JMYS.com)  
4153 Country Club Drive | Long Beach, CA 90807

Florida address: Jeff Merrill Yacht Sales, Inc. | 2650 W State Road 84, Suite 103 | Ft. Lauderdale, FL 33312



## *NAVIGATOR*

**Price: \$929,000.00 Location: Manitowoc, WI**

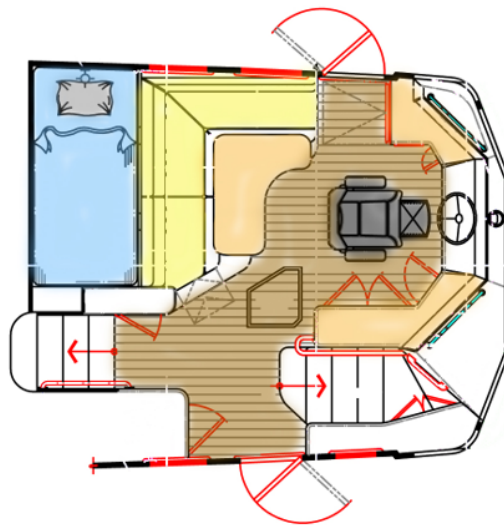
*Navigator* is for sale by her second owners who moved her from the Connecticut to Wisconsin. As the 35<sup>th</sup> hull number in the series, *Navigator* features the major product developments incorporated as Nordhavn continually refined and upgraded this popular model such as: 24V electrical, full size watch berth in the pilothouse, opening hatch in the owner stateroom; and the best equipment selections such as a Steelhead crane, Luger wing engine and ABT TRAC active fin stabilizers - all important additions that simply were not available on earlier hulls. *Navigator's* primary attributes when comparing Nordhavn 47's: Two cabin layout, flybridge with stainless framed top, fiberglass stack for the main engine exhaust and a crane for launching the dinghy.

Jeff Merrill Yacht Sales, Inc. © 2024 All Rights Reserved [www.JMYS.com](http://www.JMYS.com)

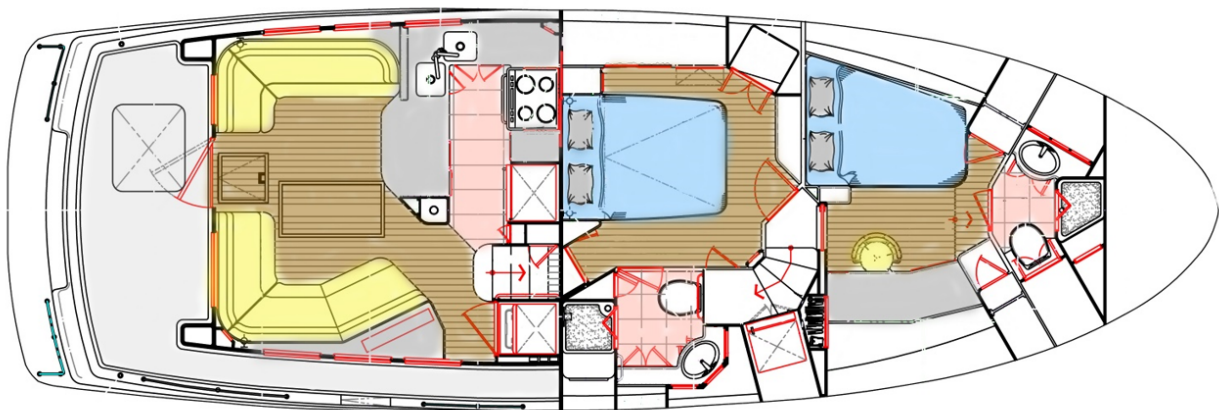
# Nordhavn 47 Navigator

**Navigator** is a fantastic trawler for an active owner operator, or couple, now more so due to the new Yacht Controller. She has generous accommodations and a comfortable layout. The entry level has a spacious saloon and an ideal offshore galley. The raised pilothouse is ideal for underway operations with the flybridge above providing a choice in command locations. The staterooms are forward and below, with the owner stateroom situated low and at the center. Interior décor is quite pleasing with Ultraleather upholstery, fitted carpet, custom blinds and granite counters. Machinery and equipment have been serviced (many upgrades and replacements during the current ownership). The engine room is newly lighted and has great headroom for easier serviceability.

## **LAYOUT: Upper Deck Pilothouse**



## **LAYOUT: Main Deck – Saloon, Galley, Staterooms**



# Nordhavn 47 Navigator

## Highlighted Equipment aboard Navigator

- Lugger 1066T main engine 174 HP – dry stack, keel cooled with 3.9:1 transmission, and 2021/2022 renovated/new stainless exhaust and 2021 stainless muffler. Has had vibration damper replaced per OEM recommendation.
- Spurs line cutter on main engine shaft
- Lugger L844D 40 HP wing engine – wet exhaust with ZF 2.99:1 v-drive transmission and Gori three blade feathering propeller. Water pump (2021), silicone exhaust, fuel tank with added drain, and Racor filter drip shield.
- 12kW Northern Lights generator with water pump (2021), cooling core, sound shield, silicone exhaust, and automatic voltage regulator.
- Reverso oil change system - hose and impeller (2022).
- Lightning ground
- Cruisair air conditioning. 3 of 5 are new, Handlers and controls (2) saloon and (1) guest replaced 2023
- Xantrex inverter/charger with bypass
- Master Volt battery charger (2021).
- Lifeline AGM batteries (including two additional 8D's for house bank). All batteries replaced 2021
- Shore power connections forward and aft. Shore power cord ends replaced (2021)
- Delta T ventilation fans in engine room
- Sea Fire fire-suppression in engine room and lazarette. Serviced 2021, 2023
- ABT TRAC 220 active fin stabilizers – keel cooled. Serviced per OEM recommended timing in 2021
- Flopper stopper set up for starboard side, with equipment in lazarette.
- Maxwell electric windlass, 2022 : 400' of chain w/ cutaway line, with chain stopper
- Rocna 55lb. anchor
- Mantus ultra swivel (2022)
- Bow tow eye
- 24V Sidepower bow and stern thruster (10.7 HP each). Mechanical legs/props (2021).
- Yacht Controller – controls main engine, thrusters, windlass (2022)
- Steelhead SM1500R crane (rebuilt 2023 with hoses, solenoids, coils, synthetic cable. New wireless remote (2021) and original wired remote serviced 2021. Future rebuild spares.
- Caribe 11' RIB with Honda 30 HP outboard, 2021: battery, switch and wiring, fuel delivery, navigation lights, hull cleaning, and 2023 battery.
- Canvas covers for hatches and windlass
- Watermakers, Inc. ISL 400 GPD water maker (tested, ready to travel), with spares, test kits, 2023 pressure switches.
- Scandvik cockpit hot cold freshwater shower: 2022
- Raritan fresh water toilets
- Black water system and display replaced 2021
- Gray water system and display replaced 2021

# Nordhavn 47 Navigator

- 2022 Custom mattress plus Froli system or owner stateroom
- 2021 Custom mattress plus Froli system for guest stateroom
- Custom fitted carpeting throughout, cleaned and stored 2021-2023
- Overhead hatches have Oceanaire roller screen/blinds
- Y-valve for galley sink overboard discharge
- Viking Professional four burner propane stove and oven
- Sub-Zero refrigerator with freezer drawers
- Additional freezer in forward stairwell
- (3) large propane tanks in cockpit locker (2021 re-certified system)
- GE Dishwasher
- GE Trash Compactor (inoperable)
- Flat screen television lift in saloon (Samsung 32" television 2023, w/ Apple TV)
- GE clothes washer and GE clothes dryer
- Custom teak dinette table with inlay in saloon
- Custom carpeting in interior
- Custom ordered granite counters on multiple surfaces including guest stateroom desk
- NuTone central vacuum (removed), 2022 Dyson V10 and 2021 Milwaukee portables on board.
- Yacht Boost shore power conditioning transformer in pilothouse (2022)
- (3) Stidd helm chairs – two on flybridge and one in pilothouse
- Flybridge clear view polycarbonate enclosure draped from stainless frame Bimini top
- Other system specific details are available.

## Specifications:

<b>BRAND AND MODEL:</b>	NORDHAVN 47 (flybridge with stainless framed top, Polycarbonate enclosure)
<b>TYPE:</b>	Long range passage maker with raised pilothouse
<b>LOCATION:</b>	Manitowoc, WI
<b>MODEL YEAR:</b>	2005, Commissioned 2006
<b>HULL NUMBER:</b>	35
<b>HULL COLOR:</b>	White gelcoat
<b>REGISTRY:</b>	United States Coast Guard documented
<b>DESIGNER:</b>	Jeff Leishman
<b>BUILDER:</b>	P.A.E./South Coast – Xiamen, China
<b>HULL MATERIAL:</b>	Solid Fiberglass
<b>DISPLACEMENT:</b>	85,000 lbs.   38.56 MT
<b>BALLAST:</b>	7,300 lbs.   3.31 MT (Lead)
<b>RANGE:</b>	3,000 miles @ 7.8 knots
<b>SPEED:</b>	Cruise 7.1 knots. Top 8.5 knots
<b>LOA:</b>	51'   15.55 M

## Nordhavn 47 Navigator

<b>LWL:</b>	47' 4"   14.43 M
<b>BEAM:</b>	16' 1"   4.9 M
<b>DRAFT:</b>	6' 1"   1.85 M
<b>D/L:</b>	450
<b>A/B:</b>	2.5:1
<b>Cp:</b>	Prismatic Coefficient .61
<b>AIR DRAFT:</b>	35'0"   10.67 M to top of antennae (est.)
<b>DECK:</b>	White deck with tan nonskid
<b>MAIN ENGINE:</b>	Lugger   LP1066T   174 HP (Main hours: ~5,560.0 June 2023)
<b>EXHAUST:</b>	Dry stack, keel cooled
<b>TRANSMISSION</b>	ZF   3.9:1 reduction transmission
<b>PROPELLER / SHAFT</b>	2.25" Aquamet 17 shaft   Four blade propeller 34" x 32"   Spurs line cutter
<b>WING ENGINE:</b>	Lugger L844D 40 HP   ZF V-drive 2.99:1   wet exhaust (Wing hours: ~150.0 June 2023)
<b>THRUSTERS:</b>	SidePower 24V/10 HP bow thruster   SidePower 24V/10 HP stern thruster
<b>STABILIZATION:</b>	ABT 220 digital active fins   Anchor flopper stopper on starboard side
<b>ELECTRICAL:</b>	60 Hertz – US style - 50 Amp
<b>SHORE POWER:</b>	50 Amp for house and 50 Amp air con, 30 Amp house @ 240V. (Fore and aft deck connections). 12.5 kW YachtBoost
<b>GENERATOR:</b>	Northern Lights 12 kW 240V 60Hz (Generator hours: ~3,900.0 June 2023)
<b>INVERTER/CHARGER:</b>	Xantrex 2500-Watt inverter / charger   Master Volt battery charger
<b>BATTERIES:</b>	Lifeline AGM - maintenance free
<b>INTERIOR LIGHTING:</b>	LED and Halogen lighting
<b>WATER MAKER:</b>	Water Makers, Inc., ISL 400 (400 gallons / day)
<b>CLIMATE CONTROL:</b>	Marine Air air conditioning (5) air handler units, 60,000 BTU's
<b>MACHINERY EQUIPMENT:</b>	Reverso oil changer
<b>WINDLASS:</b>	Maxwell VWC 3500 electric
<b>GROUND TACKLE:</b>	Rocna 55 150lb.   400' 3/8 " high test chain   Secondary Fortress
<b>CRANE:</b>	Steelhead SM 1500R - 1,500 pound
<b>TENDER AND OUTBOARD:</b>	Caribe DL 11 RIB  Honda 30 HP outboard   2022 Road trailer for tender
<b>NAV/COM BRANDS:</b>	Furuno   Icom   Simrad
<b>ENTERTAINMENT:</b>	Flat screen TV in saloon on lift   Flat screen TV in owner   Flat screen in pilothouse   Bose speakers   Stereo
<b>STATEROOMS   BERTHS:</b>	(2) Owner aft, Guest cabin forward. Sleeps Six: (2) Owner. (2) Guest. (1) Guest pipe berth. (1) Pilothouse watch berth.
<b>BEDDING:</b>	Custom HMC mattresses in Owner and Guest staterooms
<b>HEADS:</b>	(2) Raritan (electric freshwater)
<b>SHOWERS:</b>	(2) Owner and Guest (plus cockpit shower)
<b>LAUNDRY:</b>	GE separate clothes washer and clothes dryer

# Nordhavn 47 Navigator

<b>GALLEY:</b>	Viking professional propane (4) burner stove with propane oven   SubZero refrigerator, freezer drawers   SubZero freezer in forward stairway   GE Dishwasher   GE Convection microwave oven   GE Trash compactor
<b>INTERIOR WOOD:</b>	Teak. Matte, semi-gloss finish
<b>INTERIOR COUNTERS:</b>	Granite counters (many additional surfaces covered)
<b>INTERIOR UPHOLSTERY:</b>	Ultraleather
<b>INTERIOR FLOORING:</b>	Teak and spruce hardwood
<b>BILGE PUMPS:</b>	Electric standard and electric highwater   Edson manual
<b>TANKAGE: (approx.)</b>	
<b>FUEL:</b>	1,470 gallons   5564.6 L (fiberglass)
<b>HOLDING BLACK:</b>	120 gallons   454.2 L (fiberglass)
<b>HOLDING GRAY:</b>	110 gallons   416.4 L (fiberglass)
<b>FRESH WATER:</b>	400 gallons   1514.2 L (fiberglass)
<b>ADDITIONAL EQUIPMENT:</b>	(3) Stidd helm chairs   (2) Delta T ventilation fans in engine room   Seagull IV water purifier   Yacht Controller   12.5 kW Yacht Boost   Eartec three position inter-crew communications headsets   2 <sup>nd</sup> (2021) wired Crane operator, with additional new (2021) wireless RF operator
<b>SAFETY:</b>	Fire system certified 2023: SeaFire fire suppression in engine room and lazarette   Handheld fire suppression (5) conventional and (1) Halon   (5) of 10-year smoke alarm (3) CO alarm   (2) Lifeslings   SOLAS Type IV life ring   EPIRB   Ditch bag with ICOM IC-M94D handheld radio   (6) automatic life jackets with re-arming kit   (5) conventional life jackets
<b>PHOTO DATE:</b>	Most detail photos were taken in June, 2023
	<b>Note: All information is believed accurate, but should be verified.</b>

## Description:

Cockpit: The cockpit provides an outdoor space for fishing or relaxing. The swim platform aft has safety rails and two swim ladders. She is easy to board by launch from the swim platform and just inside the transom doors is a 10' hot /cold freshwater shower for rinsing off. The cockpit has a teak cap rail and includes two built-in lockers aft (storage with a breaker for the stern shore power connections to starboard and the propane locker to port with three tanks. The crane compression post is visible against the aft bulkhead, and you have access to the lazarette below through the large cockpit hatch. The cockpit connects the stern to the bow along the covered starboard side deck, accessing the flopper stopper, and there is a boarding door on the starboard side for getting on and off the dock.

Saloon: The saloon is entered through the Dutch Door. The interior is lively with beautifully matched teak joinery and additional installations of granite counters throughout. **Navigator** has comfortable settee seating to port and to starboard. There are two ottomans (matching upholstery with storage inside). To starboard, a beautiful custom moveable triangular high-low teak table with inlay. The teak and spruce soles are covered by edge bound carpeting. The starboard settee features a 2023 flat screen television and Apple TV, on a lift. Forward, outboard of the stairs to the pilothouse and behind the tall louvered door are the laundry appliances, a separate clothes washer and clothes dryer.

**Jeff Merrill Yacht Sales, Inc. © 2024 All Rights Reserved [www.JMYS.com](http://www.JMYS.com)**

# Nordhavn 47 Navigator

Galley: This galley has been set up and used to prepare numerous meals on board. The Viking Professional four-burner propane stove and oven has been the most favorite appliance. The galley includes a double basin stainless steel sink with Seagull IV purified water tap, dishwasher, trash compactor (note – does not crush, is used as a slide out trash bin now) and Sub-Zero refrigerator with (2) freezer drawers. There is overhead storage aft and multiple lockers and drawers including a sliding door pantry forward of the Viking. The microwave and countertop convection ovens were new in 2021.

Pilothouse: The raised pilothouse is a few steps up from the entry level and includes an impressive arrangement to provide a comfortable and easily manageable operational command center. The Stidd helm chair is adjustable and there is a wraparound bench seat with table behind. For off watch crew there is a large single watch berth aft with Froli coils. The windows offer excellent visibility. There is an impressive assortment of navigation/communication electronics with controls for the bow and stern thruster, main engine, wing engine, generator, navigation computer and UPS, and 2022 Yacht Controller. The electrical panel is installed in an easily accessed island panel with clearly labeled breakers and digital read outs. Under the port settee is a 12.5 kW 2022 Yacht Boost shore power stabilization and isolation transformer. Two Dutch doors open outboard to allow access to the Portuguese bridge deck – aft to port for the boat deck and flybridge and the starboard door provides entry to the foredeck or aft to the cockpit. Note: See Pilothouse summary table below for details.

Landing: Going down a curved set of stairs you pass the Sub-Zero freezer and then arrive at the lower-level landing. The guest cabin and head is forward, the owners stateroom and head is aft.

Guest Stateroom: The guest stateroom forward is very appealing with the tall headroom and practical layout. The head, sink and shower are forward. There are ( qty 3) overhead hatches and ( qty 6) outboard opening portlights. The double berth is to port with a 2021 HMC custom innerspring berth with Froli system. For an additional overnight guest, there is an easily opened pipe berth “cot” above. The desk to starboard features a rare, granite surface with swivel chair and custom bookshelves with deep storage locker. A lighted hanging locker is to port, the tall starboard hanging locker is fitted with shelves.

Owner Stateroom: The location of the owner stateroom aft makes for a very comfortable sleeping area underway. The overhead hatch (built in to the Portuguese bridge) allows for natural air flow (supplemented by the dorade vent on the foredeck). The bed is fore/aft with a custom 2022 HMC innerspring mattress with Froli system, reading lights, and granite bed side cabinets. Outboard to port is a bureau with sliding door hanging locker, a bank of drawers and a tilt out laundry hamper. A tall lighted hanging locker is forward to port (converted to shelves) and there are drawers under the bed so you have closing storage options. There is a flat screen television mounted forward. Along the starboard side is easy access to the head, sink, and shower. Entry to the engine room is aft through the teak veneer door.

Engine Room: 2022 lighting. One special machinery highlight aboard is the headroom in the engine room. The white gelcoat throughout was a special order to help reflect light. There are safety rails (including a tool tray) surrounding the Luger main engine which is keel cooled with 2021/2022 dry stack exhaust and lagging. Forward is the aluminum fuel supply tank which is gravity fed from the two fiberglass fuel tanks outboard. Forward to port is access to the stabilizer and fuel manifolds, there are

# Nordhavn 47 Navigator

lockers outboard to starboard with access to through hulls and the other stabilizer. The aft section of the engine room has the Luger wing engine to port with independent fuel tank and start batteries. The Northern Lights generator is installed to starboard. Access panels in the sole allow you to inspect the bilge and stuffing box.

Lazarette: Aft in the engine room is a commercial door that grants access to the lazarette. 2022 lighting. You can also access this area through the cockpit hatch above. Both the engine room and the lazarette are protected with built in fire suppression. The collection of equipment in this location includes batteries, air conditioning, water maker, crane machinery, steering system, inverter and more.

Foredeck: The foredeck is entered through a fiberglass gate in the Portuguese bridge. To port are forward shore power connections. There are two large built in deck boxes and three Lewmar hatches. Forward is the anchor well with Maxwell electric windlass with 400' of chain rode (2022) to a Rocna anchor. A Freeman hatch opens to access the chain locker, and the auxiliary Fortress anchor.

Portuguese Bridge: The Portuguese bridge allows for a protected deck area forward, a walkway between the foredeck and the pilothouse. There are storage lockers for stowing gear, round opening portlights to the guest stateroom and a recessed hatch that connects to the owner stateroom.

Boat Deck: The boat deck area is divided by the Steelhead crane. The Caribe RIB tender is mounted to starboard. The dinghy and outboard are original and have been actively used and serviced. The fiberglass dry stack exhaust is forward with flag halyards and antenna mounts.

Flybridge: The view from aloft is wonderful. The flybridge is directly atop the pilothouse. There is a stainless framed Stamoid cover over top with clear see-through protective polycarbonate curtains that zip in place for all-weather protection and hinge up and out of the way to bring in the breeze. Two Stidd helm chairs are forward with a bench seat is behind. The navigation and electronics are easy to see and adjust. Note: See Flybridge summary table below for details.

**Navigator** has been cruised from Florida to the Bahamas and up through Nantucket and Martha's Vineyard enjoying the coast and islands of New England up to Maine. She has traveled the St. Lawrence Seaway to Lake Michigan where she has been fresh water based in Manitowoc, WI. She has enjoyed her last three years of heated with power winter storage from November to April in Maine and Wisconsin.

<b>Flybridge</b>	<b>Brand and Model</b>
Helm chairs	(2) Stidd helm chairs
Helm	Edson angled steering wheel with rotation knob
Main engine	Display with analog gauges   Double lever Morse controls
Stabilizers	ABT TRAC remote panel select active or centered
Thrusters	Bow and stern thruster toggles
Windlass	Remote control - up/down
Horn	Button
Compass	Ritchie Power Damp with Nordhavn card
Stereo	Speakers
Navigation	Furuno NavNet vx2 with radar, chart plotter, depth, etc.



## Nordhavn 47 Navigator

Display mount	NavPod for NavNet vx2
VHF 1	Icom IC-M506
VHF 2	Icom CommandMic II
Autopilot	Simrad FU 25 follow up lever (inoperable)
Chart software	Furuno Time Zero
Search light	ACR digital point pad controller
Repeater	Furuno F1-50
Auxiliary breaker panel	For exterior deck lights and future 50 A 24V DC flybridge / stack loads
Flybridge Deck Light	LED

<b>Pilothouse</b>	<b>Brand and model</b>
Helm	Edson angled steering wheel with rotation knob
Helm chair	Stidd helm chair
Main engine	Lugger analog display with auxiliary temperature gauges   Murphy digital power view
Engine controls	Morse cable dual lever controls
Generator	Northern Lights display
Wing engine	Lugger analog display   Morse cable dual lever controls
Stabilizers	TRAC digital stabilizer panel
Thrusters	Side Power dual lever toggle controls
Hand held remote command	Yacht Controller thrusters/engine/windlass hand held control
Monitors	Samsung 19" port side
Chart plotter	Furuno NavNet with TimeZero
Chart software	NavNet TimeZero
GPS	NavNet vx2 included
Radar	NavNet vx2 with 64-mile open array antenna
Depth	Simrad digital display
Wind	Simrad analog display
Speed	NavNet vx2 included
Autopilot 1	Simrad AP 25 display   Simrad FU 25 jog lever
AIS	Furuno AIS
CCTV	Bosch (2 cameras - engine room 1, engine room 2)
VHF - 1	ICOM IC M602 with mic control hailer (hailer inoperable)
VHF - 2	ICOM command mic II
VHF - hand held	ICOM M94D
VHF - remote mic	Galley (note display inoperable)
Satellite telephone	Sea Tel control panel (inoperable)
Satellite television	DirecTV removed
Compass - digital	Furuno rate gain compass (owner bed)

## **Nordhavn 47 Navigator**

Compass - analog	Ritchie Powerdamp Plus
Furuno	Furuno FI-50 Multi repeater
Computer	HP with APC 1000 VA UPS
Windlass	Maxwell windlass toggle
Inverter panel	Xantrex display
Electrical panel with breakers	12V, 24V, 120V, 240V breakers with shore forward/aft and generator select switches   12V Nav Com breakers   Airconditioning zones   50 Amp remote panel in flybridge
Chart light	Port side of pilothouse
Chart table	Hinged leaf port side pilothouse
Chart drawers	(2) under settee foot landing for settee
Search Light	ACR digital point pad controller
Internet	Starlink (subscription)
Entertainment - television	Saloon 32" Samsung flat screen television   Apple TV (saloon)   Owner stateroom 27" flat screen television
Entertainment Stereo	Fusion MS-AV650 control in pilothouse (with DVD)   Speakers throughout
Wipers	Imtra control pad
Horn	Push button
Gray water	Dometic light bars with key - owner head
Black water	Dometic light bars with key - owner head
Fresh water	Analog tank level display - owner head
Printer	HP 3755
Fire Suppression	Safety panel - Sea Fire display for engine room and lazarette
Alarm - water in fuel	Safety panel - Racor alarm
Alarm - high bilge water	Safety panel - Ultra Safety Systems high water bilge alarm
Bilge pump breakers	Safety panel - Electric and high water - auto/manual
Ships bell	Next to chart drawers
EPIRB	ACR Global Fix V4 (pilothouse aft)
Ditch Bag	In pilothouse wet hanging locker

- **Note: People's Choice Award winner at Baltimore TrawlerFest, September 2018**

The Nordhavn 47 is one of the most popular models ever built by PAE. The hull mold was extended aft to develop the Nordhavn 52, which has a larger cockpit, but the same interior volume as the 47. The detail photos were taken in June of 2023. Please review the additional information online including photos, 360 room-by-room tour and our YouTube video. **Navigator** She is available for inspection by appointment – please get in touch to learn more. We welcome your inquiry, let's get you aboard!

# Nordhavn 47 Navigator

## Nordhavn 47 Navigator Talk Through Tour



**CTRL+Click the above image for shortcut to the Talk Through Tour or cut and paste the link below.**

[https://youtu.be/xm0\\_uyqp8C4](https://youtu.be/xm0_uyqp8C4)

## Nordhavn 47 Navigator 360° Tour



**CTRL+Click the above image for shortcut to the 360 Tour or cut and paste the link below.**

<https://360trawlerspin.com/tours/navigator/index.htm>

Jeff Merrill Yacht Sales, Inc. © 2024 All Rights Reserved [www.JMYS.com](http://www.JMYS.com)

# Nordhavn 47 Navigator



## ADDITIONAL BROKER COMMENTS:

**Navigator** is a US Coast Guard Documented vessel (with entry summary paperwork available). The second owners hired **Steve D'Antonio** during the purchase evaluation and Steve attended the survey haul out and underway, conducting an extensive inspection. Once closed, **Navigator** was moved to the Hinckley yard in Maine for several months of systems refreshments and upgrades. Many of these improvements are behind-the-scenes, like black and gray water plumbing and the main engine exhaust and muffler refit. Over \$200,000.00 was spent to help insure **Navigator's** longevity and performance. The owner's relationship with Steve D'Antonio continues today. It is very satisfying as a broker to help the original buyer set up an outstanding vessel and continually gratifying to see the care and attention continue with the second owner. She is one of my favorite Nordhavn 47's.

**Exclusions:** Potential purchasers should assume that items on the vessel at the time of viewing, but not specifically listed on this sheet, are not included with the sale of the yacht. These specifications are believed to be true and correct but cannot be guaranteed. Items excluded include, but are not limited to Paintings, tools, handheld nav gear and binoculars. The owner's personal effects and clothing will be removed prior to closing.

**Disclaimer:** Jeff Merrill Yacht Sales, Inc. presents the details of this vessel in good faith but cannot guarantee or warrant the accuracy of this information nor guarantee or warrant the condition of the vessel. Buyers should instruct their agents and their surveyors to investigate all details the buyers desire validated. This vessel is offered subject to prior sale, price change, or withdrawal without notice.

**Brokerage:** JMYS is a US based (licensed and bonded yacht brokerage in California, Florida, Virginia and Washington) with an international emphasis specializing in ocean capable trawlers and recreational tugs. Our brokers are experienced boaters, most are trawler owner/operators with thousands of hours

## Nordhavn 47 Navigator

and miles at sea. We treat our clients with respect, we are responsive and not pushy. Our focus is to become your loyal advocate, always looking out for your best interests. The team at JMYS has extensive trawler and motor yacht product knowledge and our skills are available for coaching after the sale has concluded.

**Co-Brokerage:** Fellow yacht broker association members: *Navigator* is available for Co-Brokerage, please call to discuss special listing arrangements in place.

This listing specification has been approved by the sellers for accuracy. The photos, images and descriptive content are copyrighted by JMYS and may not be copied or used without specific written permission.

**Listing broker. Jeff Merrill, CPYB** (Certified Professional Yacht Broker) has extensive product knowledge of the trawler market plus direct experience with the Nordhavn brand (over two decades) and is very well acquainted with the Nordhavn 47. He was the original salesperson for the order and delivery of *Navigator* and helped the current owners purchase her in July of 2020. Jeff is a familiar face to YouTube viewers and a regular presenter at TrawlerFest. He writes about trawlers for *Ocean Navigator* and *PassageMaker* magazines and is one of the online instructors for *Boaters University*.

Please contact listing broker, **Jeff Merrill, CPYB** by phone, text or email for additional information or to schedule your personal showing. Jeff is available via Mobile + 1 949.355.4950 (call or text). You can send a detailed Email to: [Jeff@JMYS.com](mailto:Jeff@JMYS.com).



**Licensed and Bonded in California, Florida, Virginia and Washington.**

Skype: jeff.merrill | You Tube: Jeff Merrill Yachts | Twitter: @merrillyachts | LinkedIn: jeff.merrill

Facebook: Jeff Merrill Yacht Sales | Instagram: JMYSTrawlers

Chairman, Certification Advisory Council (CAC) for CPYB 2023 and 2024

Yacht Brokers Association of America | International Yacht Brokers Association (Florida) | Northwest Yacht Brokers Association | California Yacht Brokers Association – President 2015 and 2016

